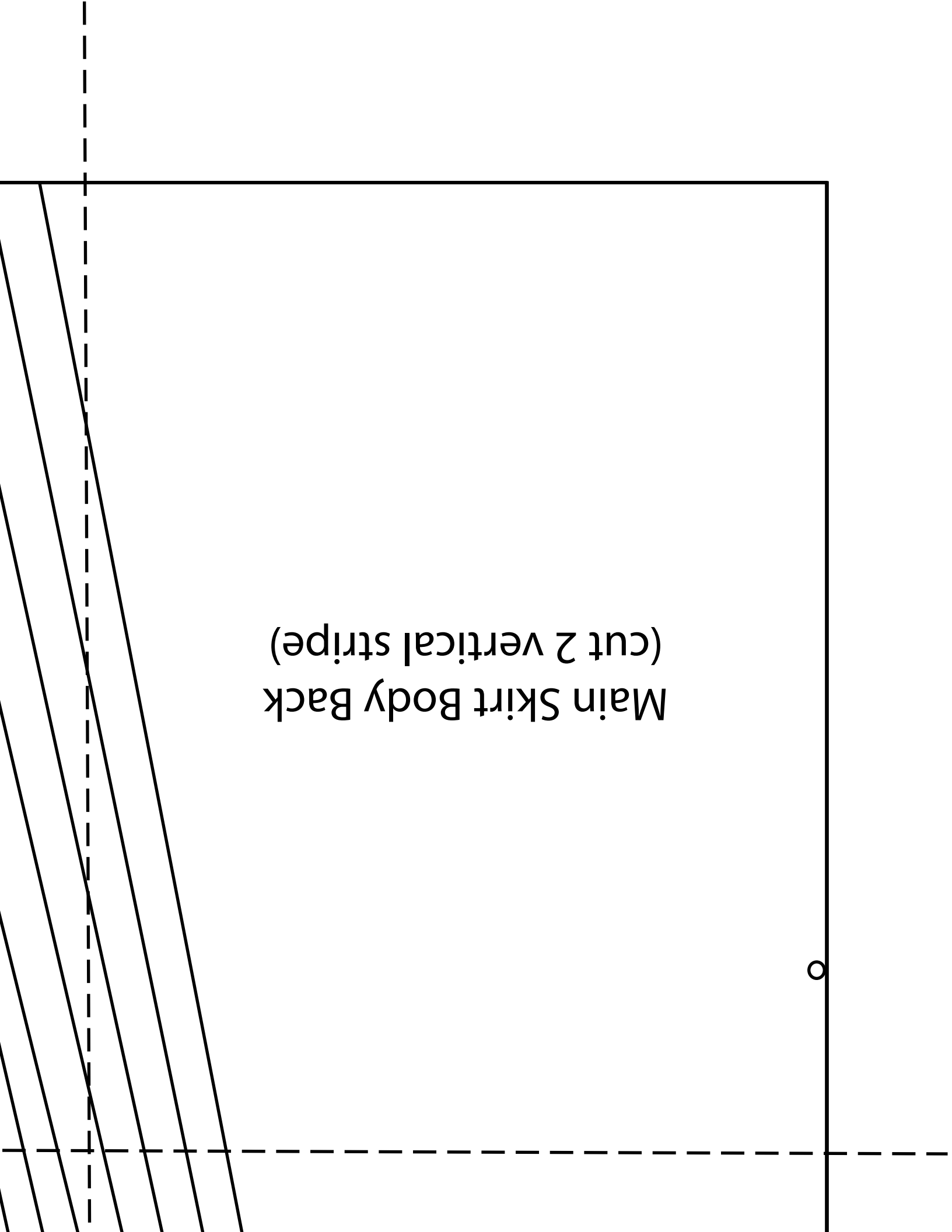
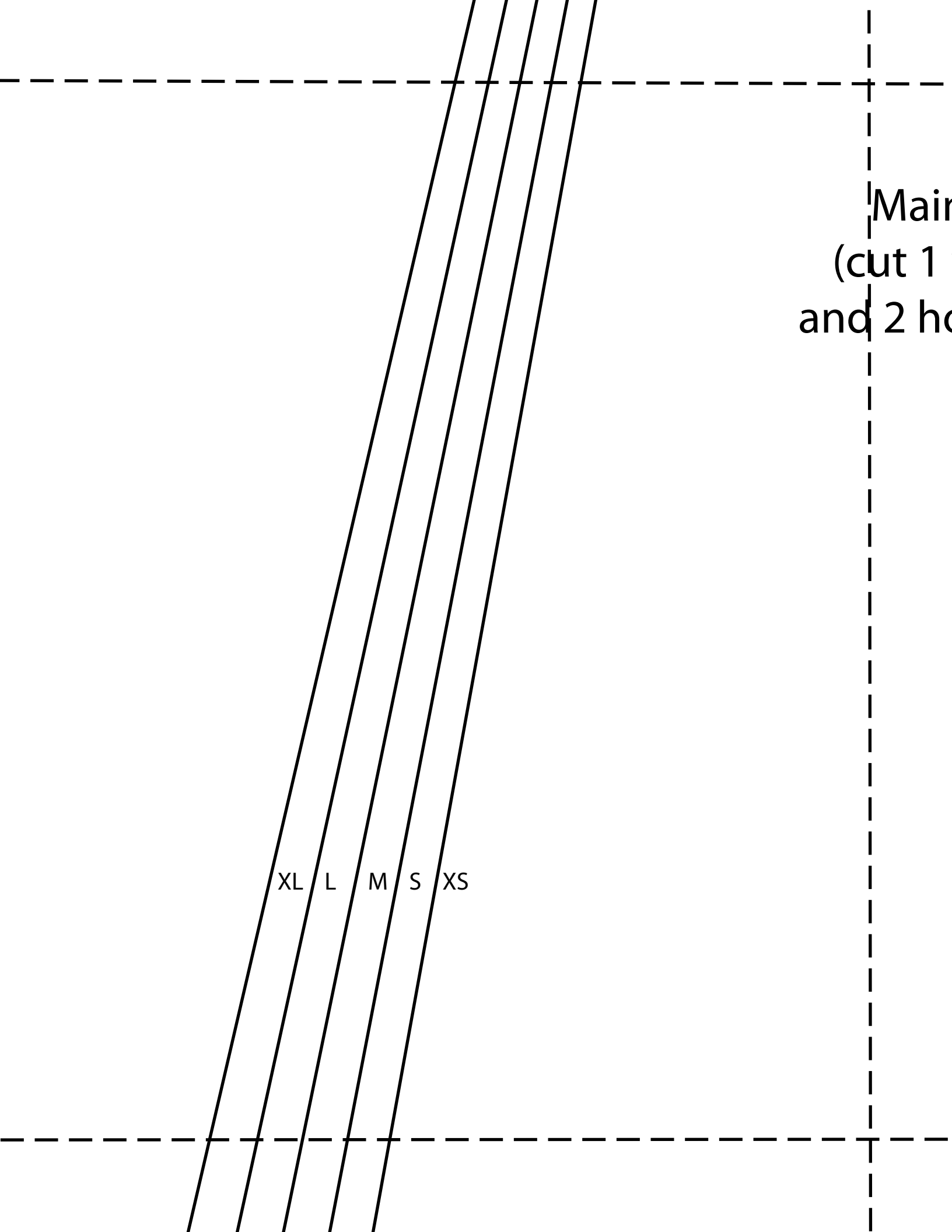


Main Skirt Body Back
(cut 2 vertical stripe)



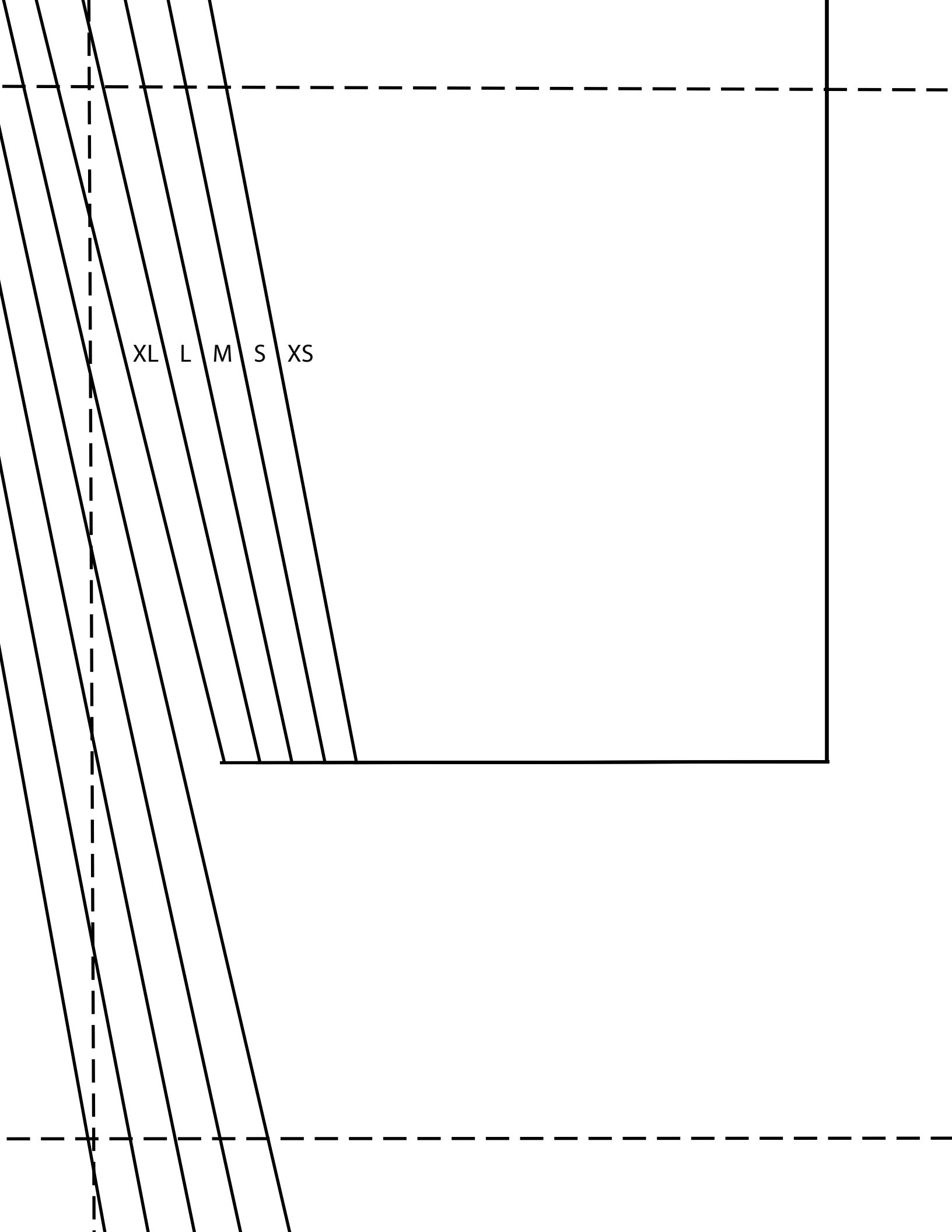


XL L M S XS

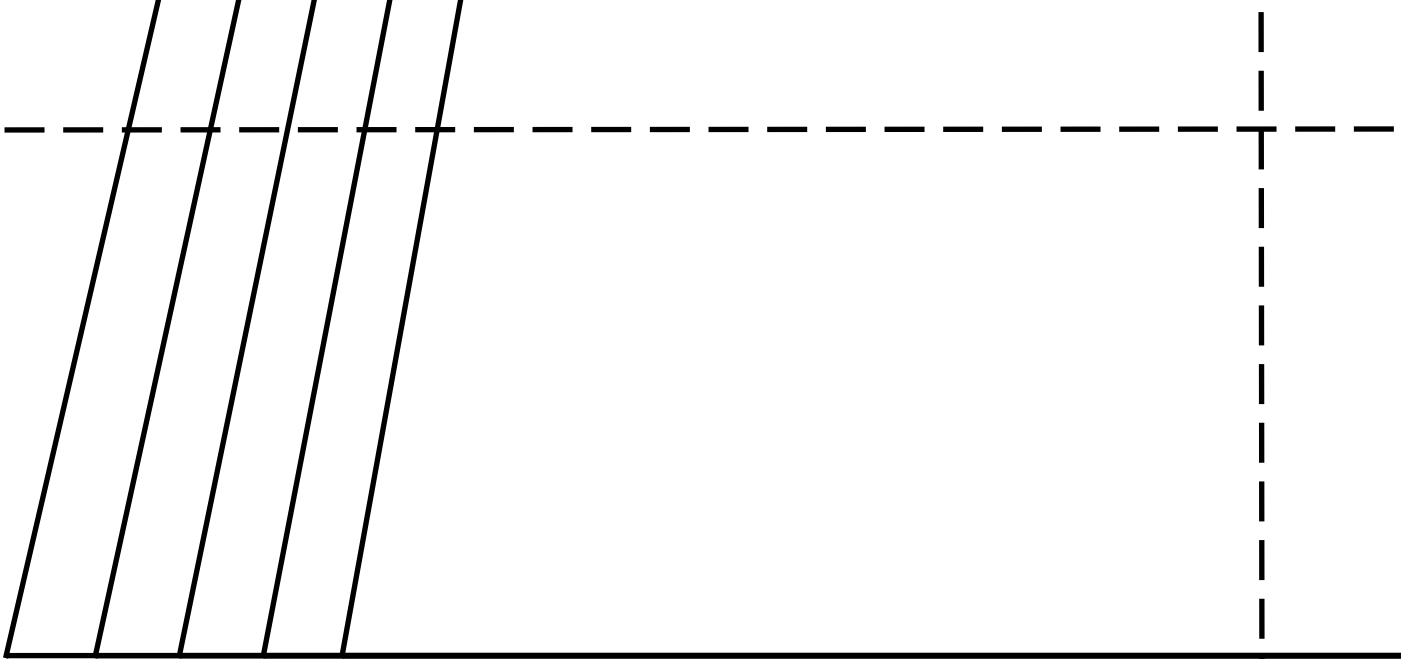
Main
(cut 1
and 2 ho

Main Skirt Body
(cut 1 vertical stripe
and 2 horizontal stripe)

XL



XL L M S XS



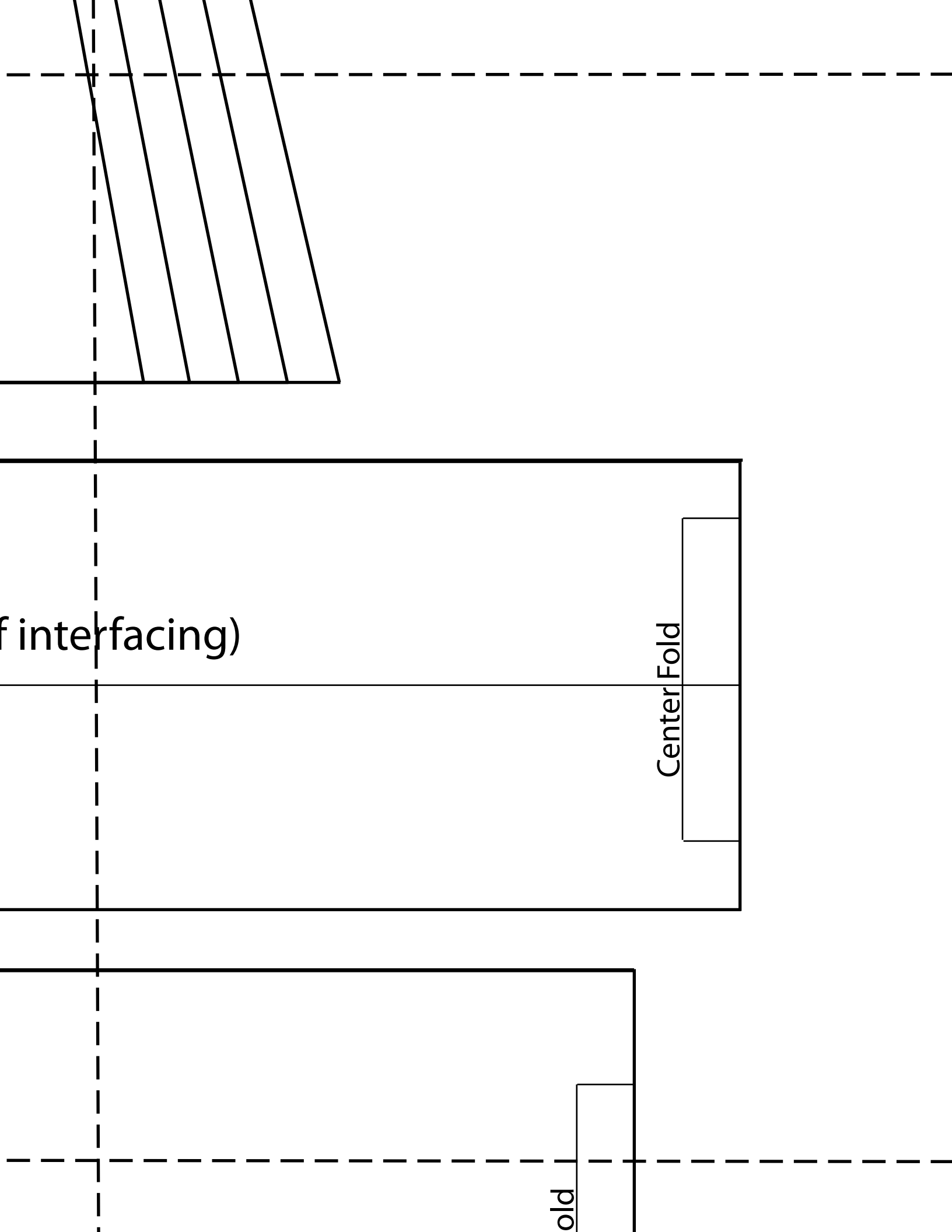
XL	L	M	S	XS	W



Waistband (cut 1 of fabric and 1 of interfacing)

Bottom Band Front (cut 1)

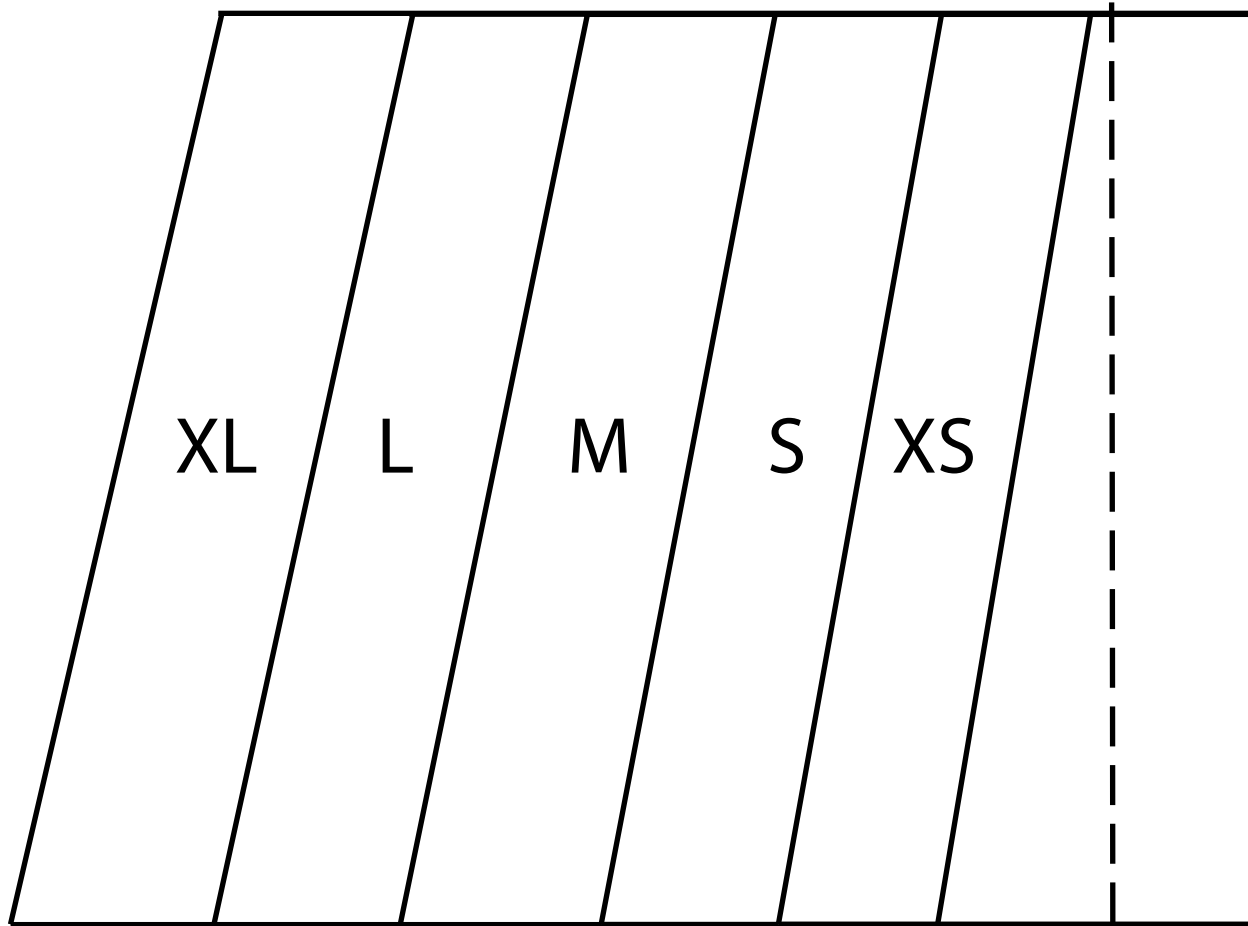
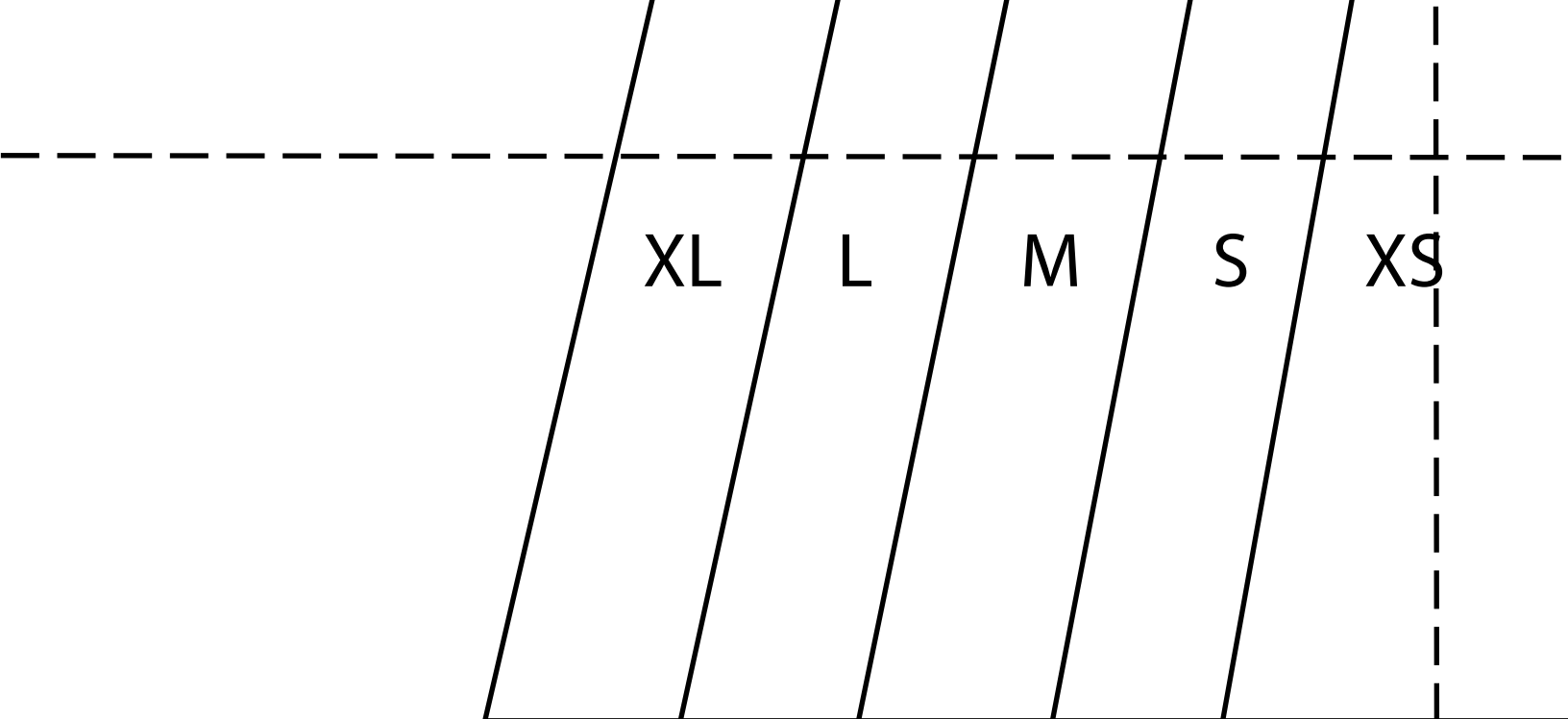
XS

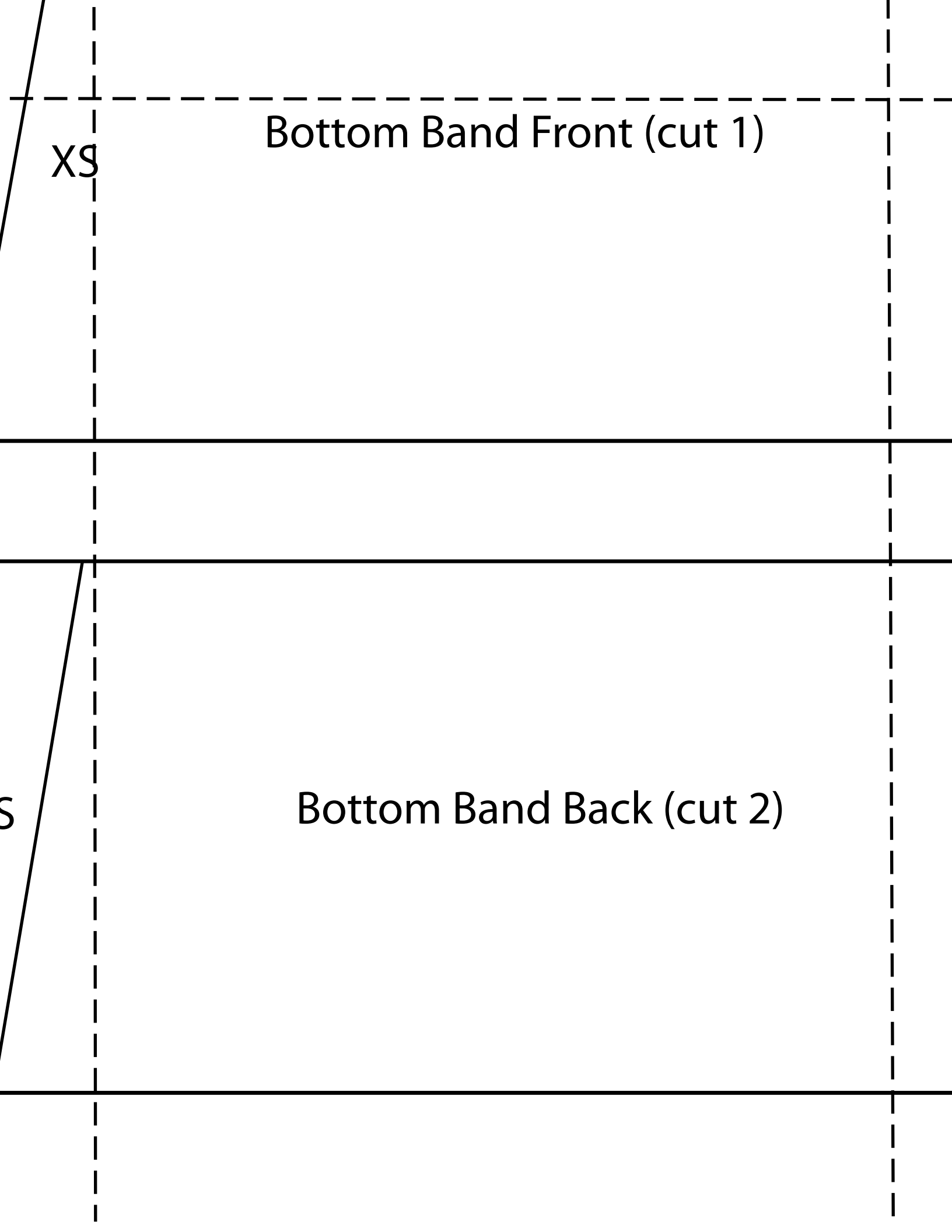


f interfacing)

Center Fold

old



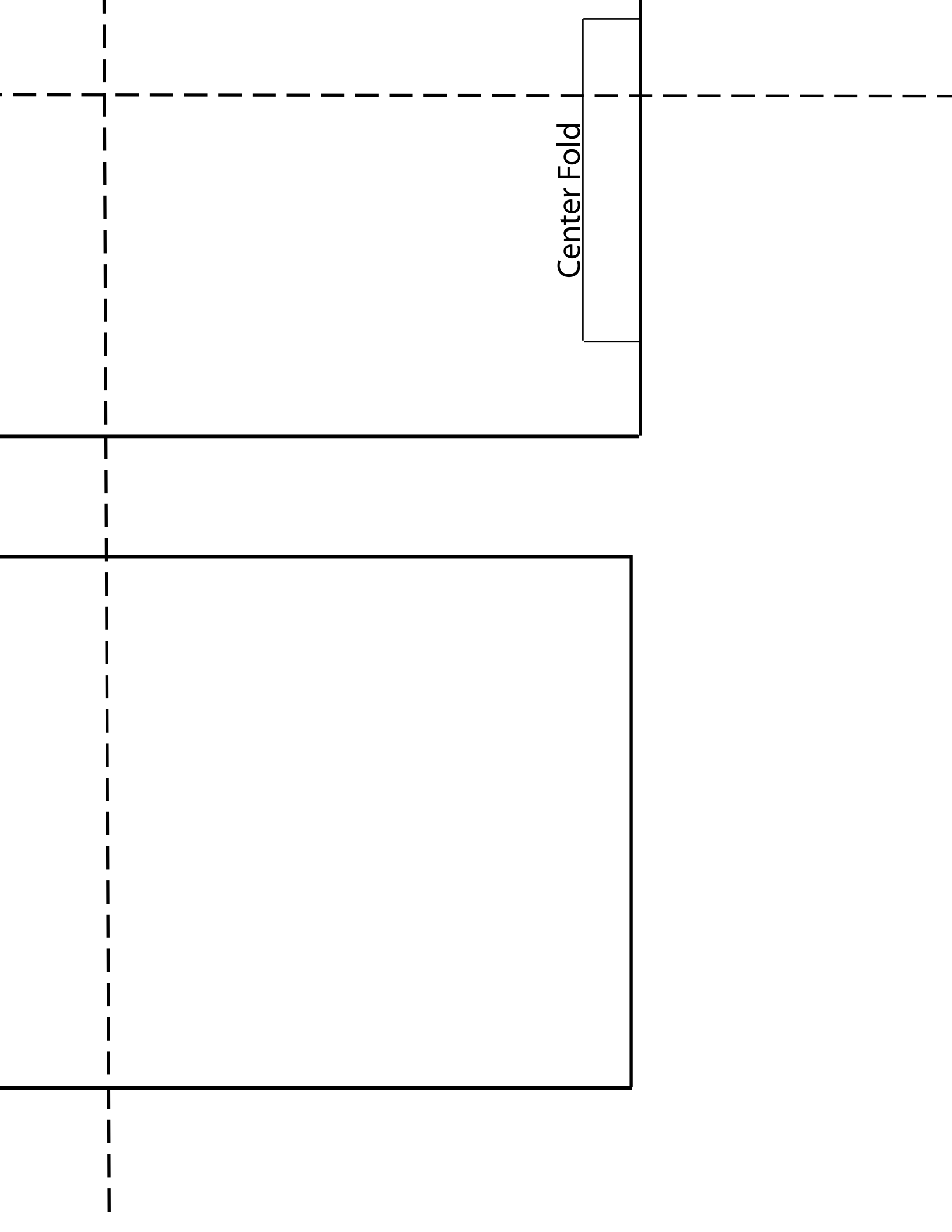


Bottom Band Front (cut 1)

XS

Bottom Band Back (cut 2)

S



Center Fold