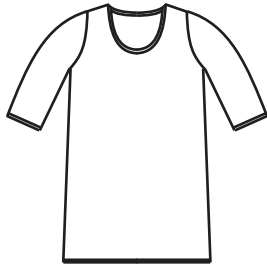


DixieDIY.com T-Shirt Dress Pattern

Loose fitting knit mini dress with three quarter length sleeves and scoop neck.



1/4 in Seam Allowances

3/4 in allowance for hems

Supplies

1 and 2/3 yards 60 in wide knit fabric (jersey, interlock, sweater knits), matching thread.

Optional: Instead of making your collar out of the same fabric as the dress you could use rib knit but you may want to shorten the collar piece as rib knit is extra stretchy. You can also use Stay Tape to help stabilize the shoulder seams.

Tips

To sew knit fabrics use a serger or use a zig zag or stretch stitch on your sewing machine.

Sizing

Included is the finished measurements of the garment. The dress is designed to be slightly loose fitting so choose a size that is slightly larger than your body measurements. If you want a closer fitting dress, choose a size that is closest to your body measurements. Knit fabric will stretch to fit your body.

Finished Garment Sizing Chart

	XS	S	M	L	XL
Bust	34 in	36	38	40	42
Hips	36 in	38	40	42	44
Length	32 in				

Instructions

1. With right sides of Front and Back facing stitch both side and shoulder seams.
2. With right sides facing, stitch side seam on both Sleeves.
3. Right sides facing, insert Sleeves into arm holes. Match small dot on Sleeve to shoulder seam and match notch on Sleeve to notch on Front. Stitch together.
4. Hem the bottom of dress and bottoms of sleeves. Included is a 3/4 in hem allowance.
5. Right sides facing, stitch together ends of Collar. Fold Collar in half lengthwise with wrong sides together. Pin the Collar to the neck opening. The Collar's seam should match the back center of the neck opening. The center fold of the Collar should match the front center of the neck opening. Stretch the collar evenly to fit the neck opening. Stitch together.
6. Iron the Neck opening/collar seam so that the seam faces away from the Collar Piece. Top stitch the seam in place. This helps keep the Collar from flapping outward and exposing the seam.

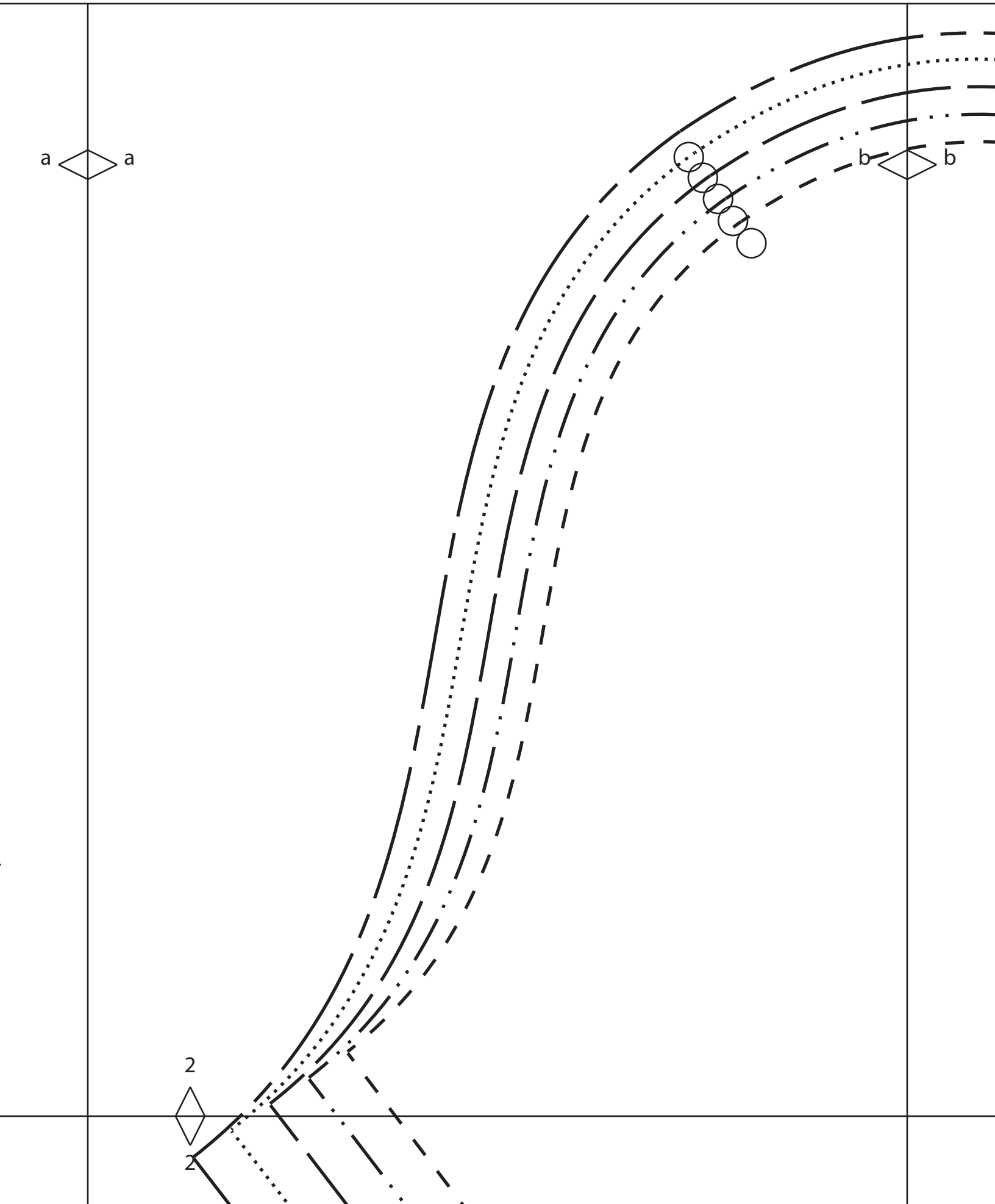


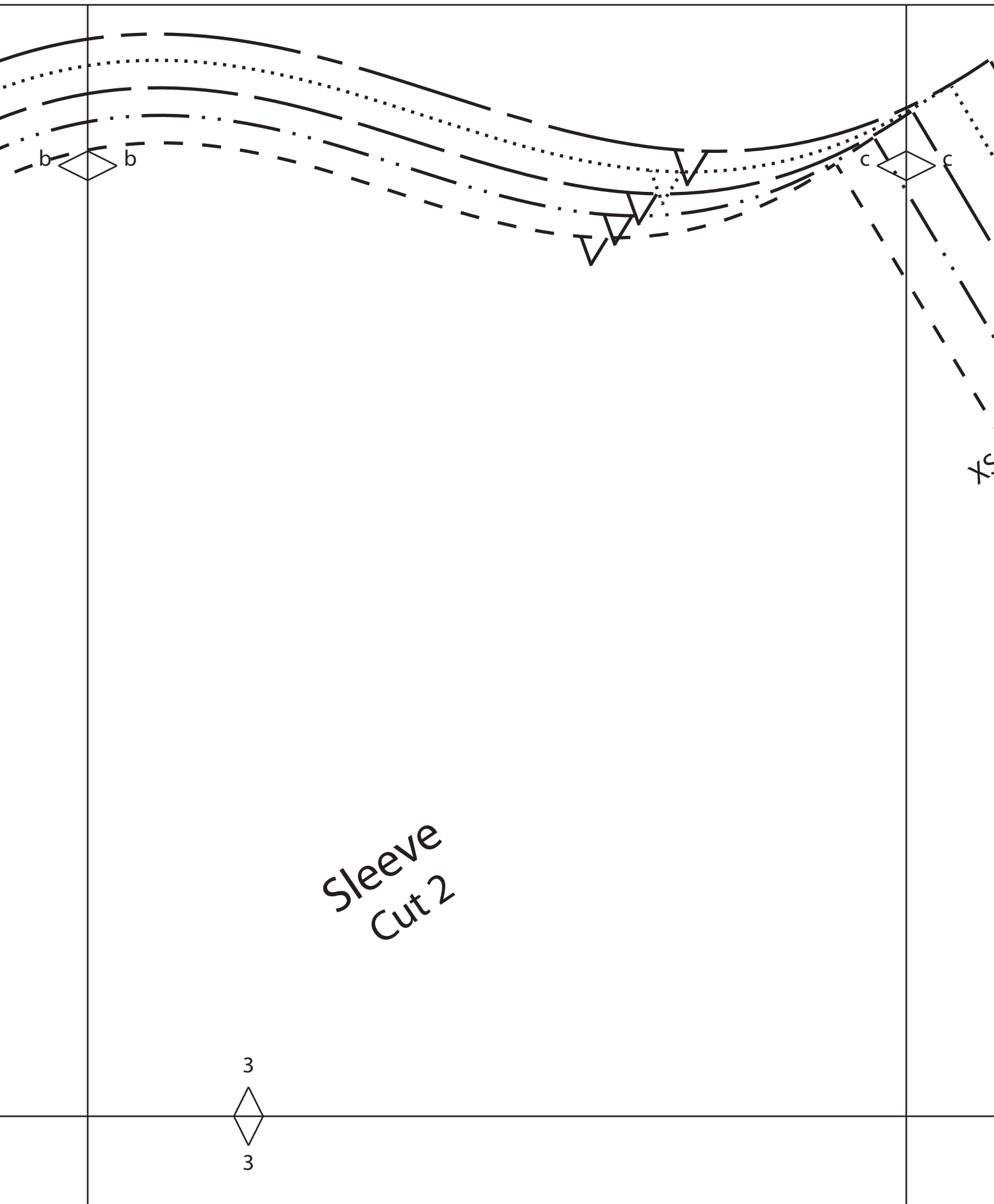
a a

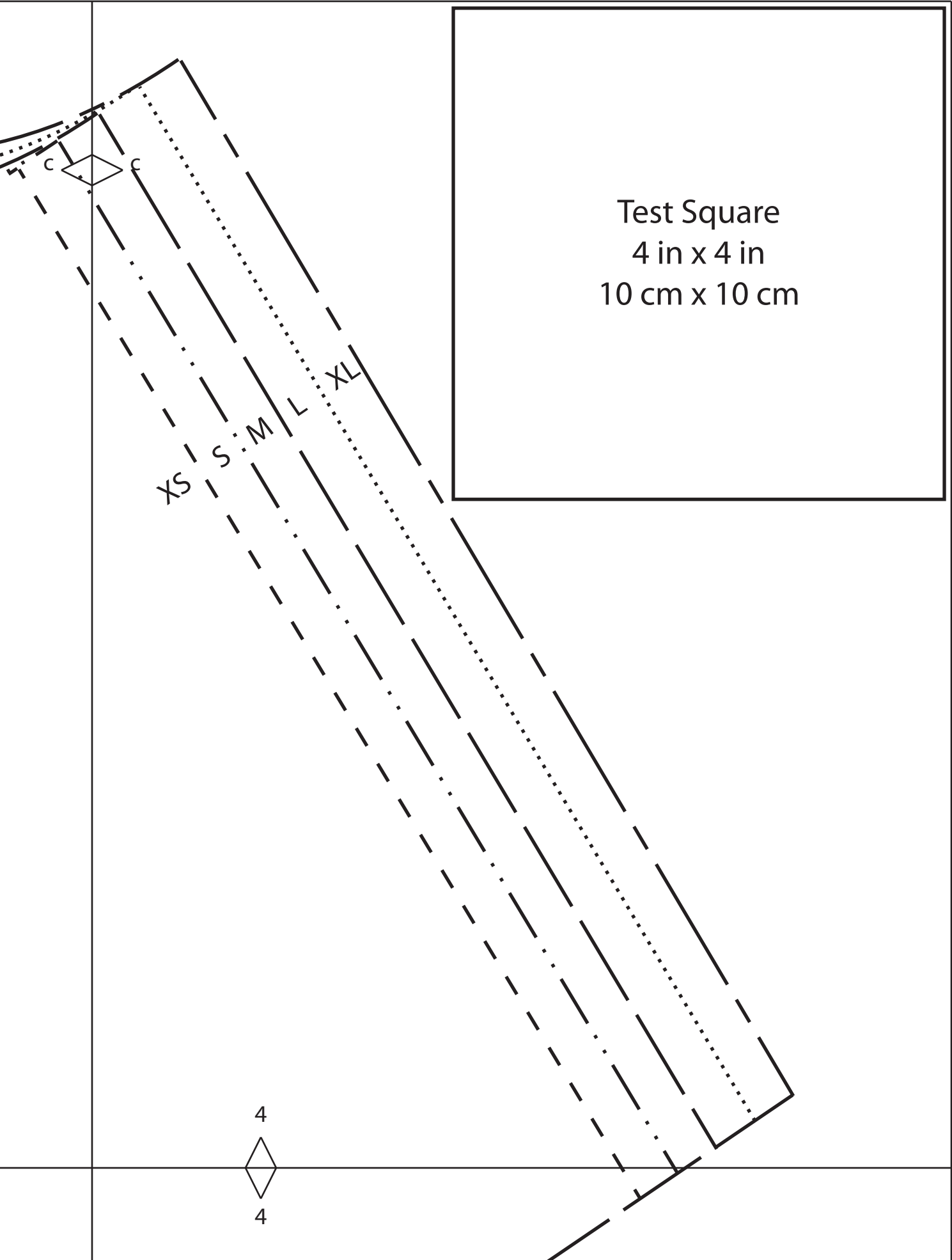
b b

2

2







Test Square
4 in x 4 in
10 cm x 10 cm

XS
S
M
L
XL

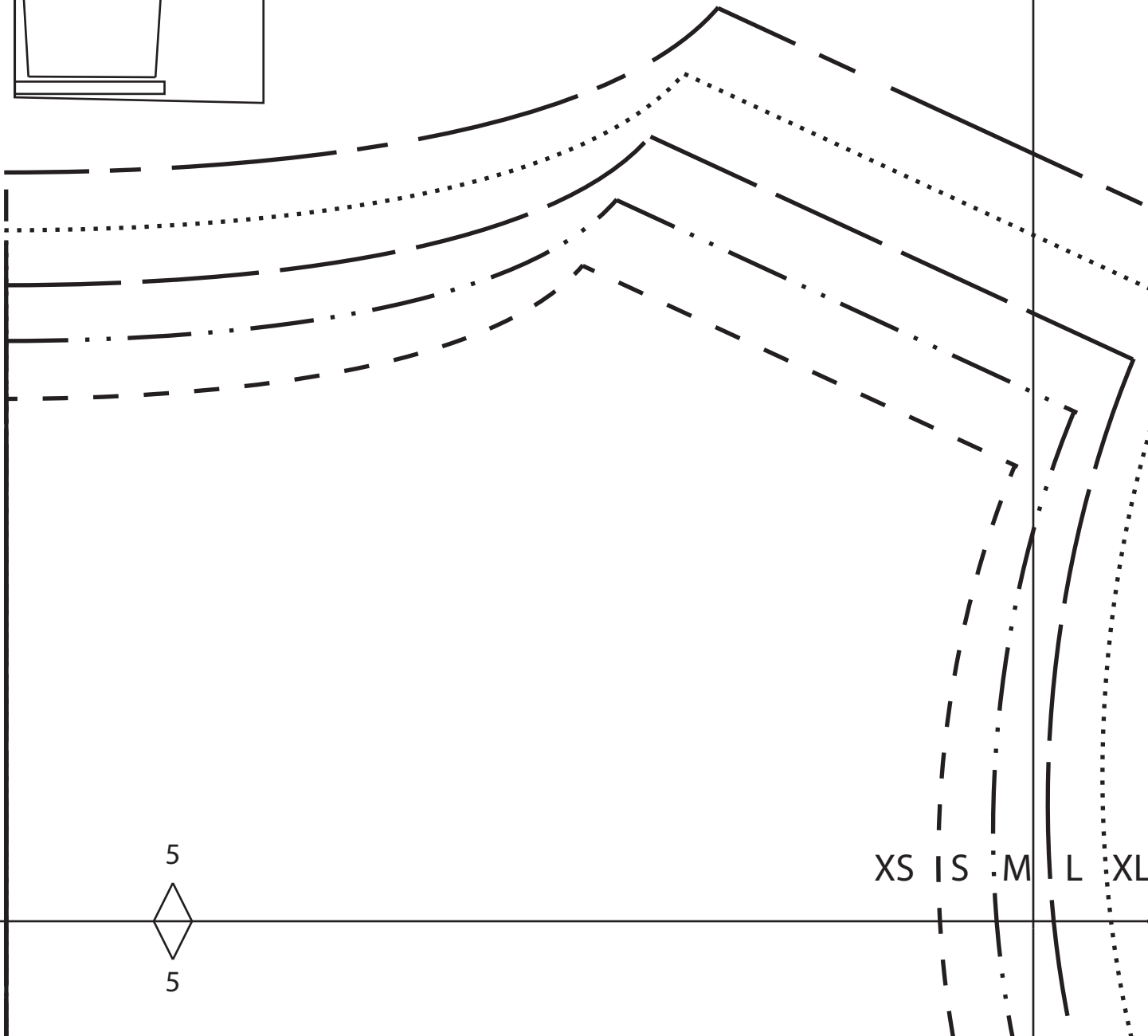
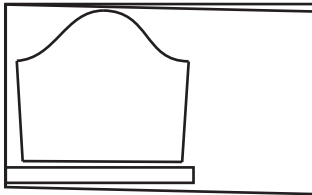
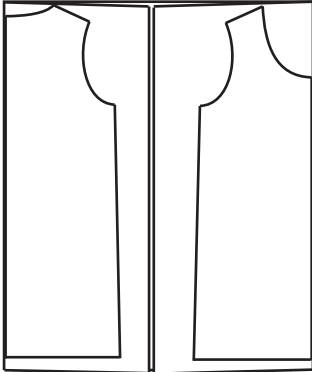
4
4

1



1

Cutting Layout

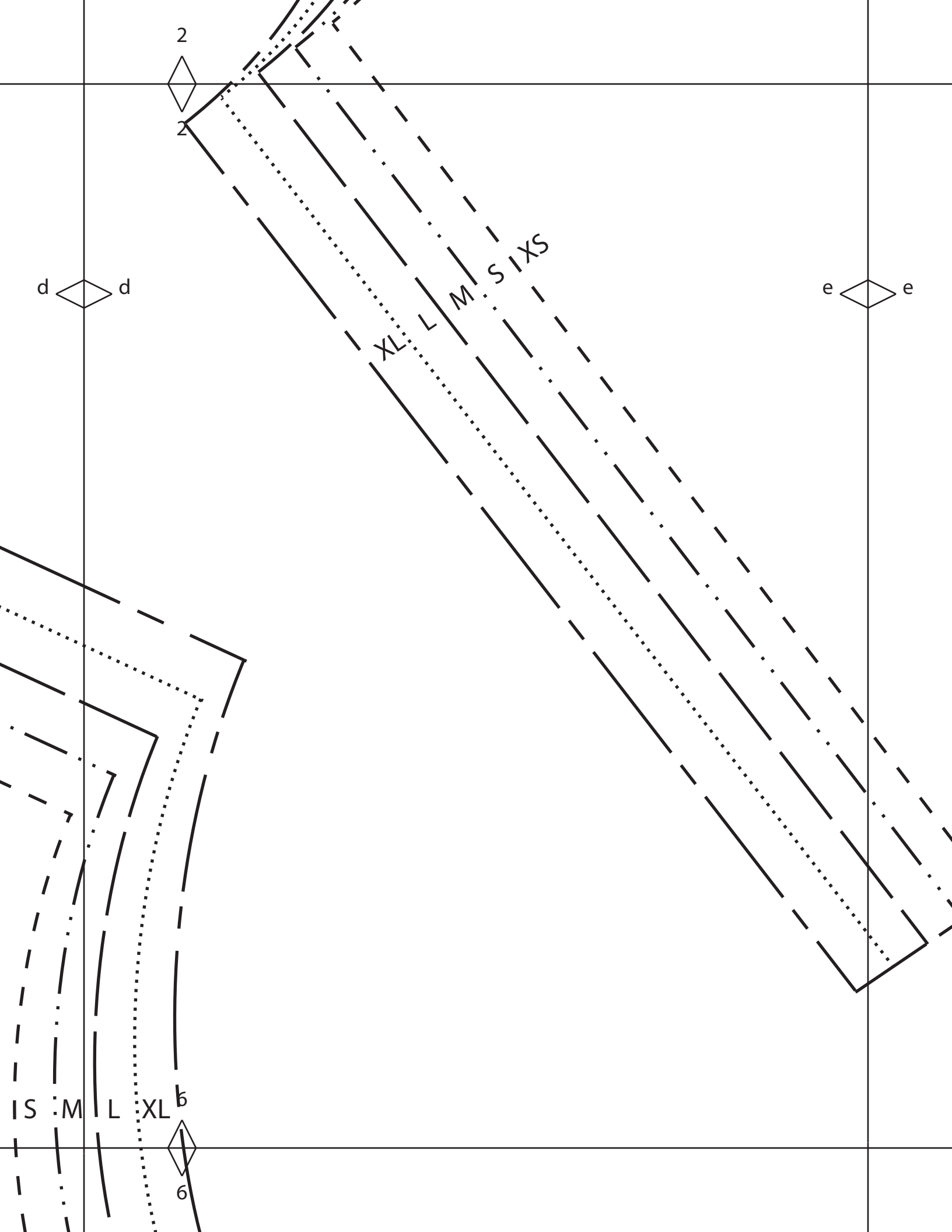


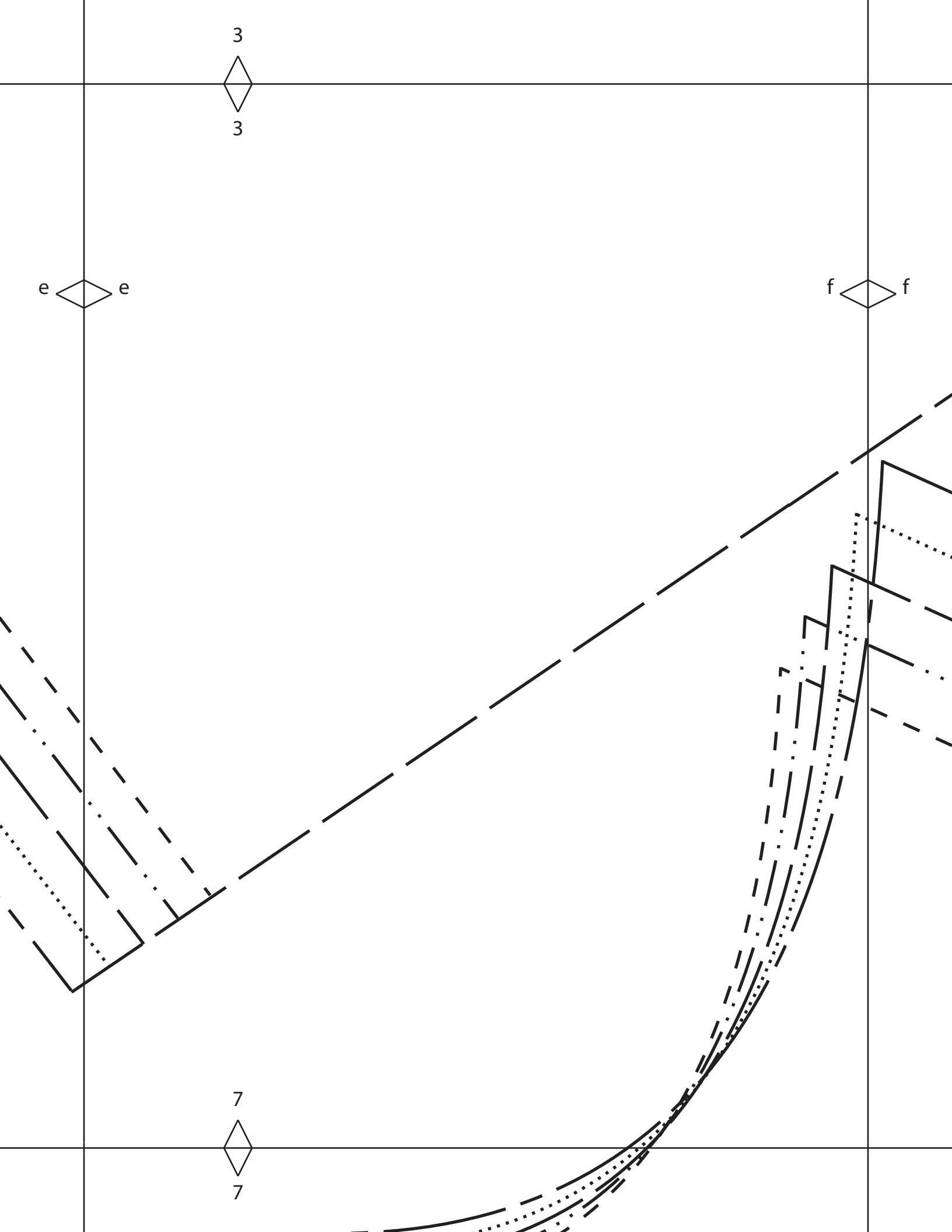
5



5

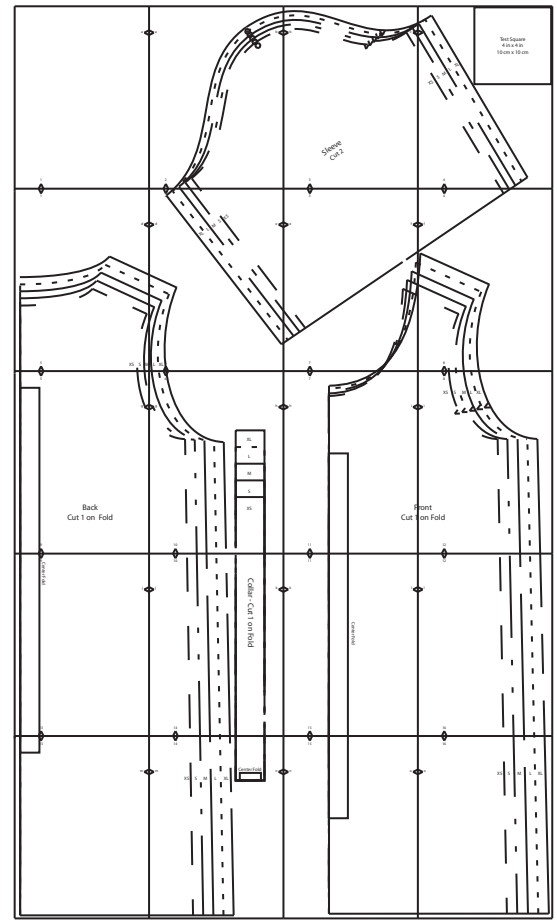
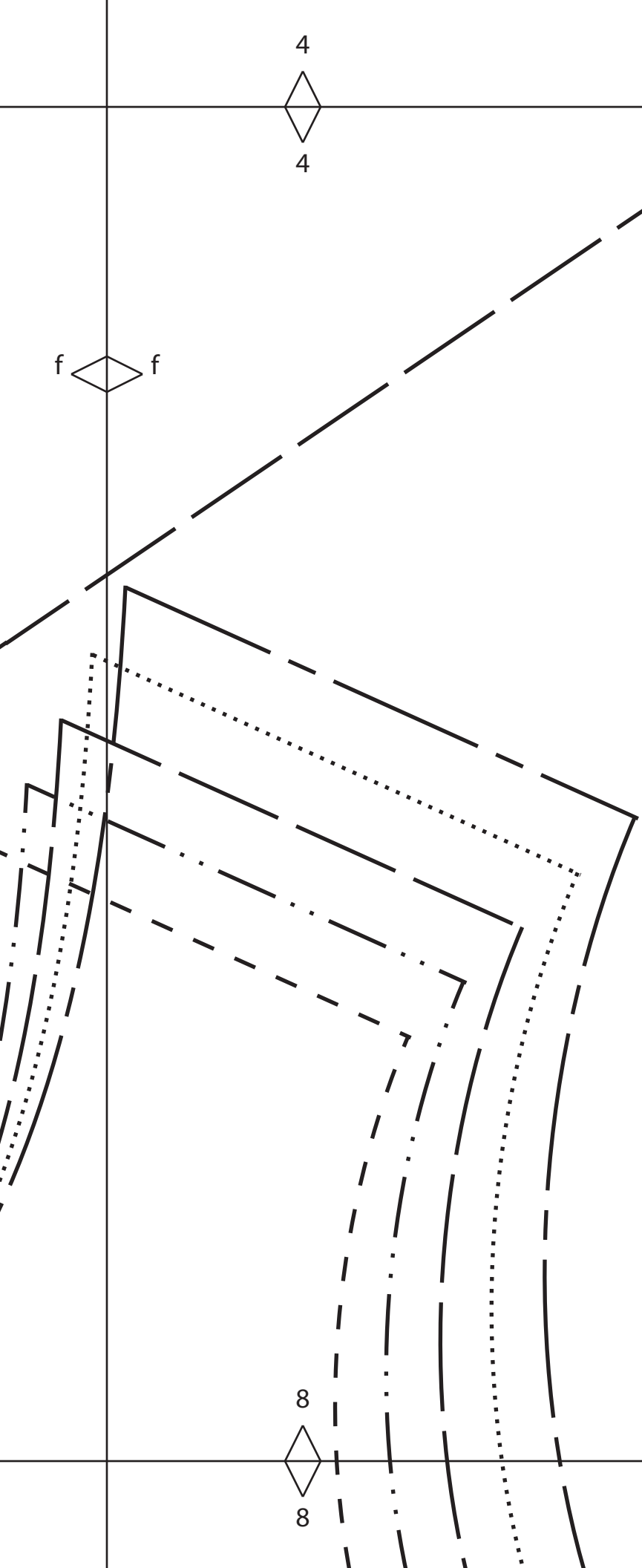
XS IS M L XL





4
4

f f



8
8

XS IS :M L XL

5



5

g



g

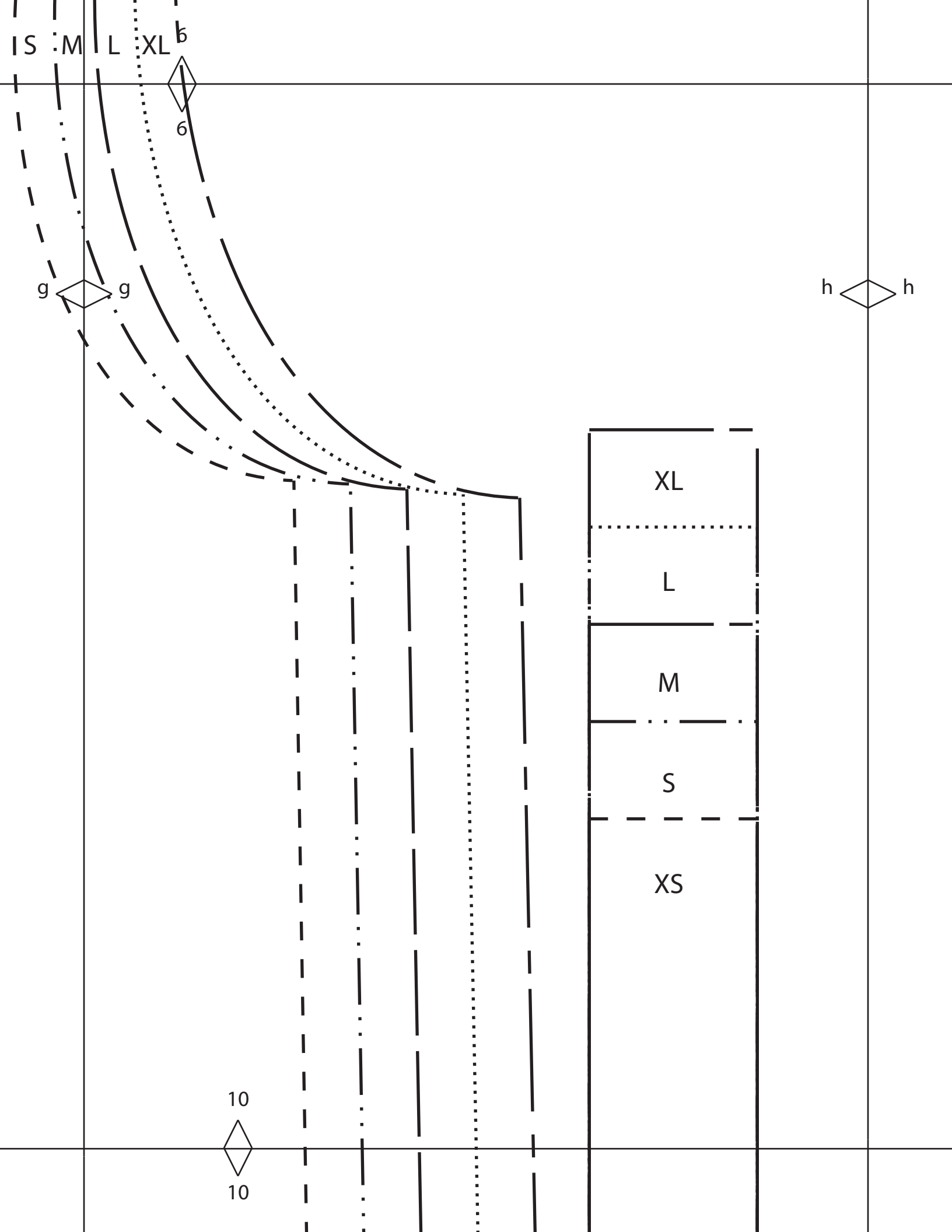
Back
Cut 1 on Fold

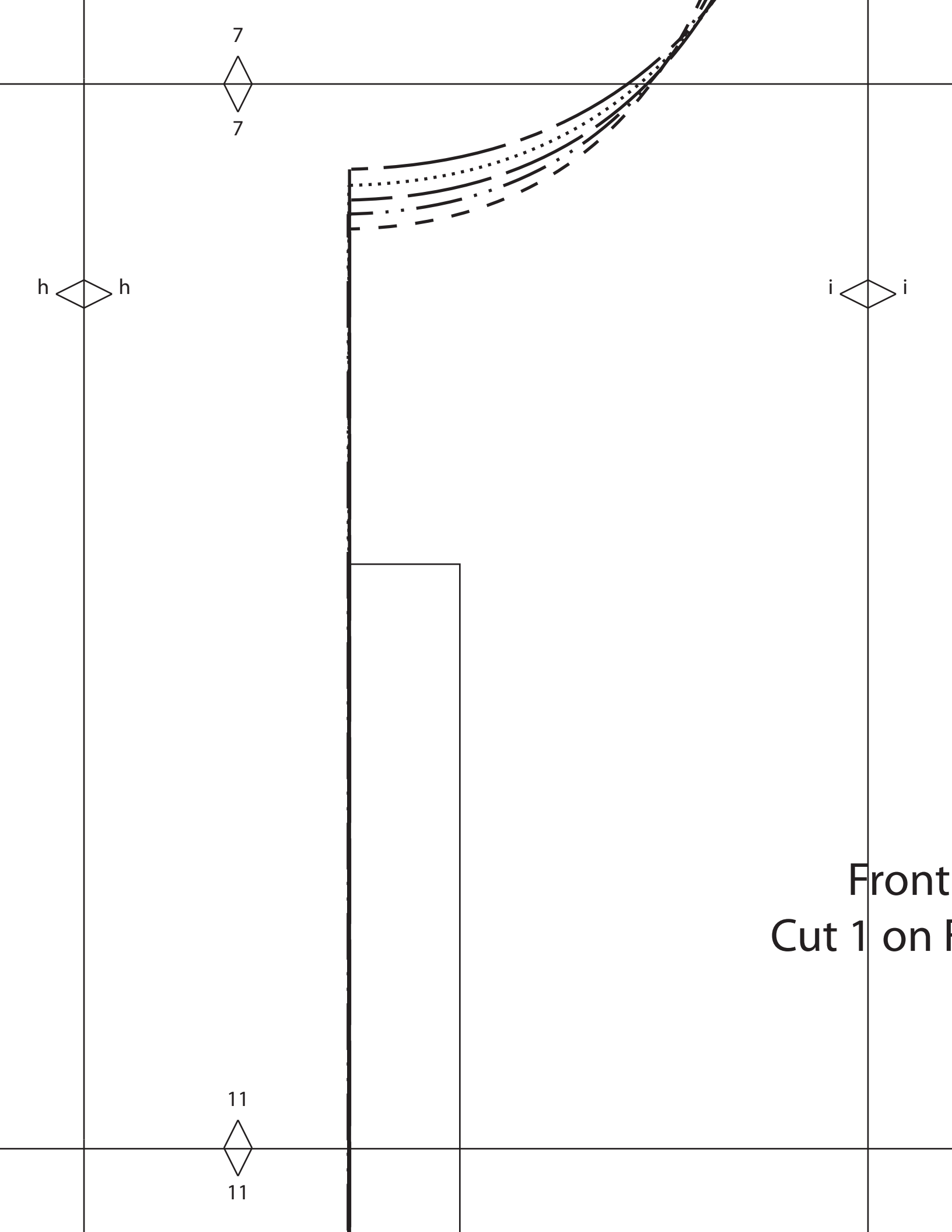
9



9

Center





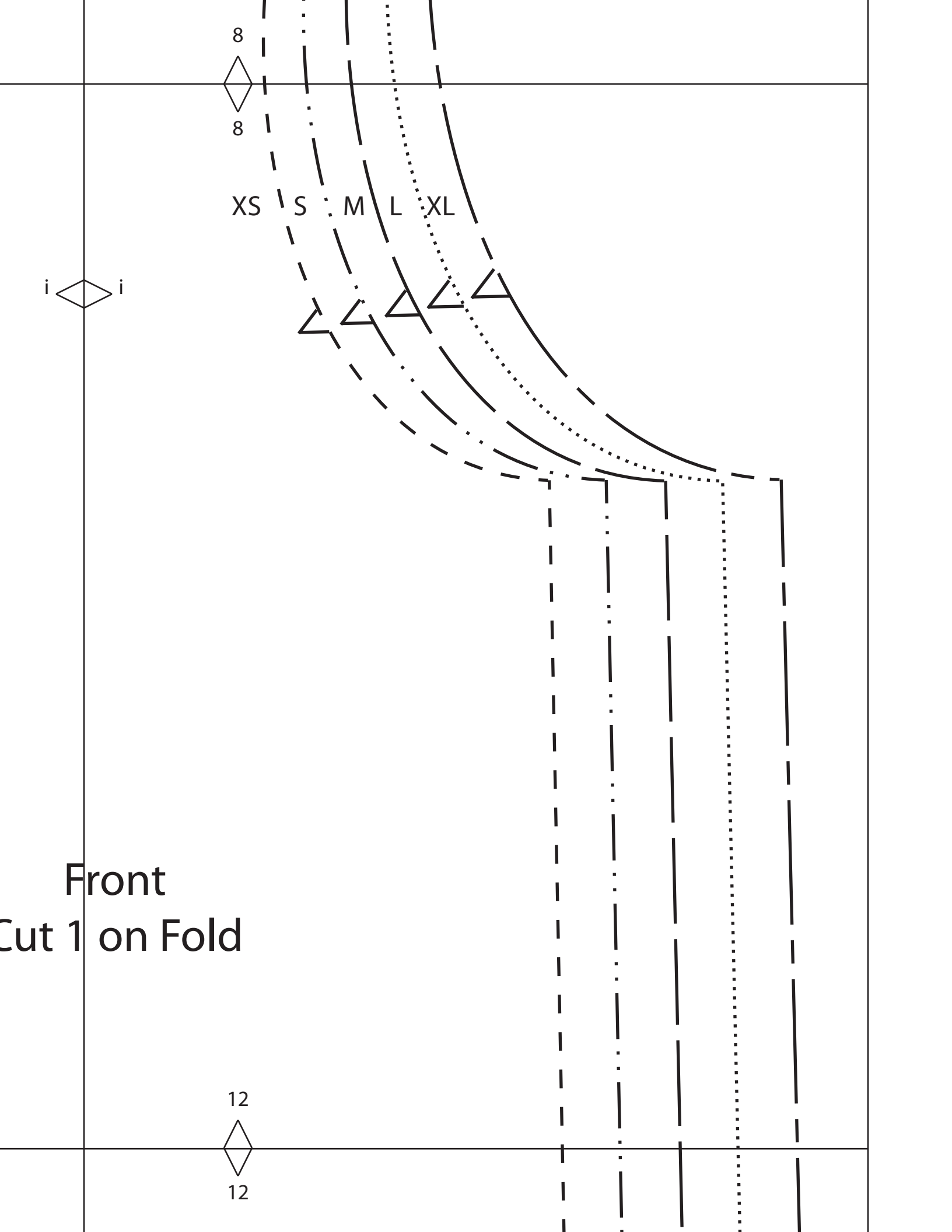
7
7

h h

i i

11
11

Front
Cut 1 on R



8



8

XS S M L XL



Front
Cut 1 on Fold

12



12

9



9

Center Fold



13



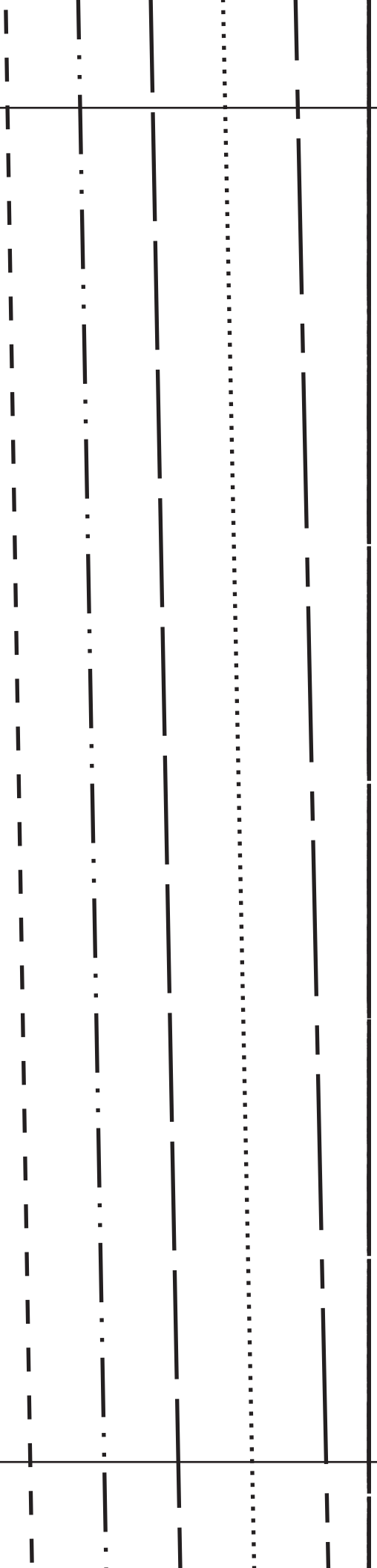
13

Collar - Cut 1 on Fold



10
10

14
14



11



11



Center Fold

15



15

12



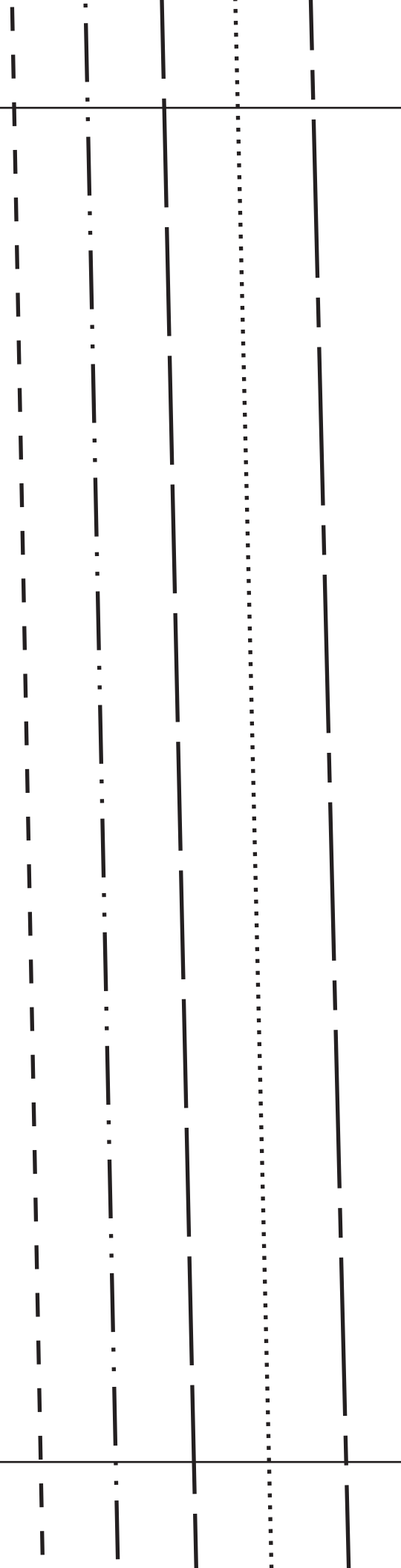
12



16



16



13



13

m



m

14



14

m  m

XS

S

M

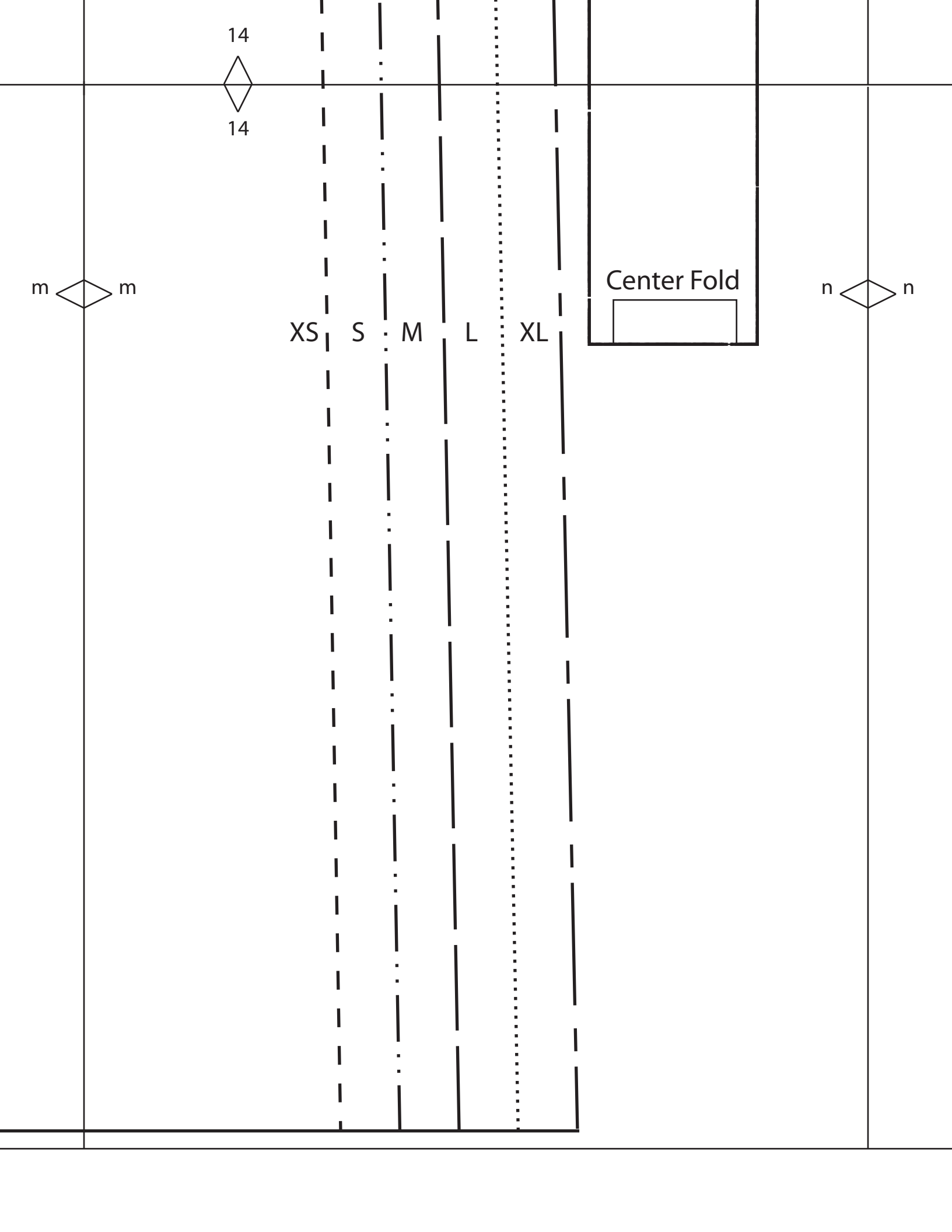
L

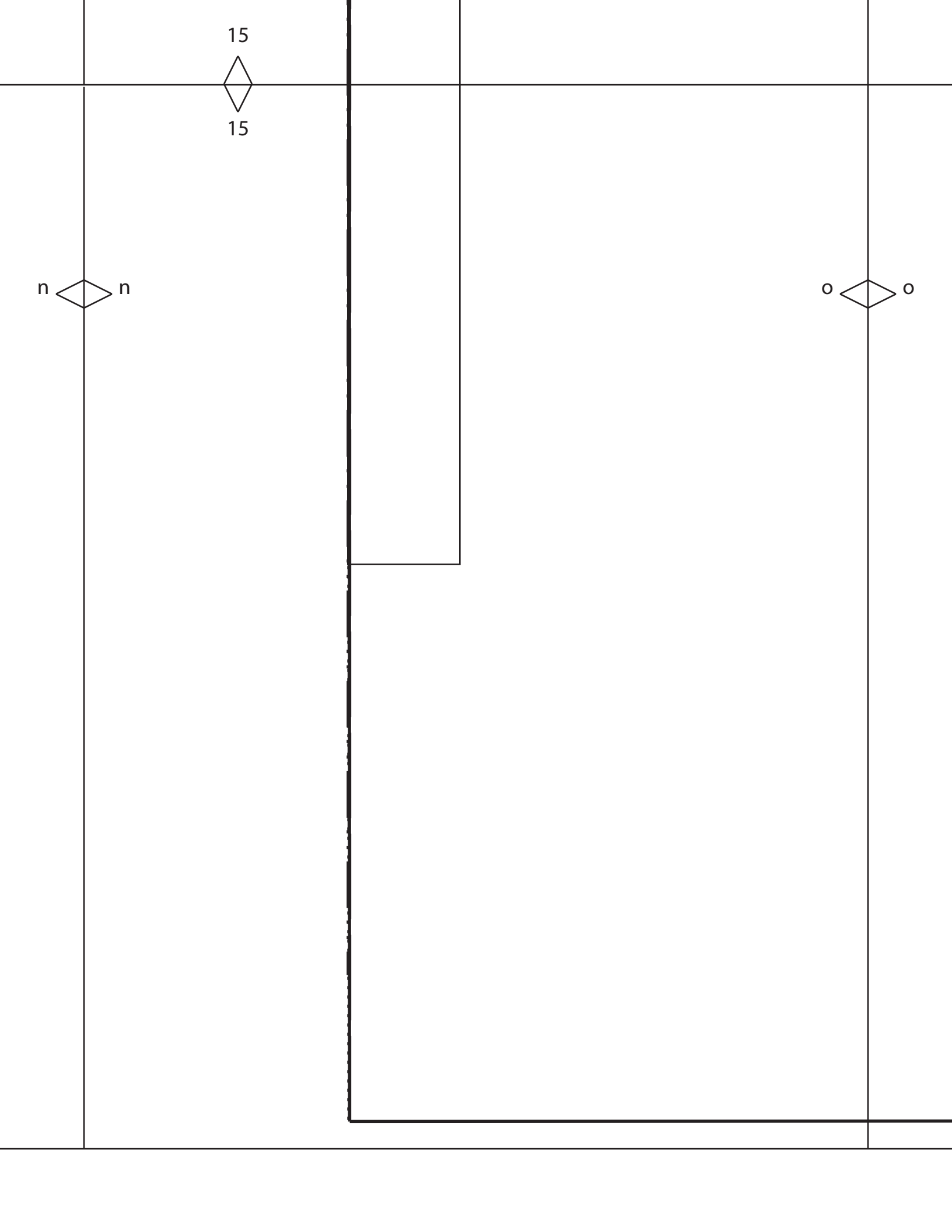
XL

Center Fold



n  n





16



16



XS

S

M

L

XL

