

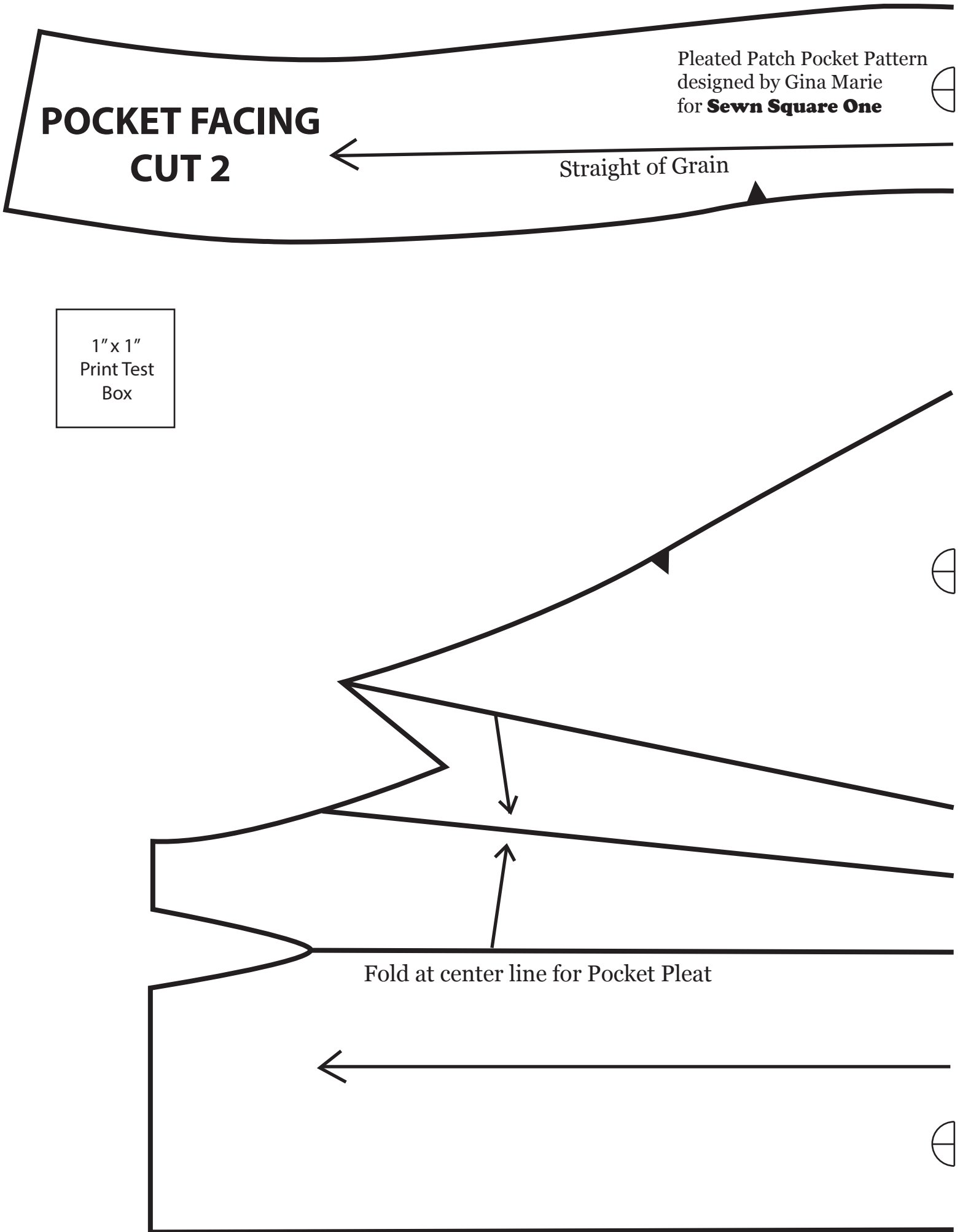
POCKET FACING CUT 2

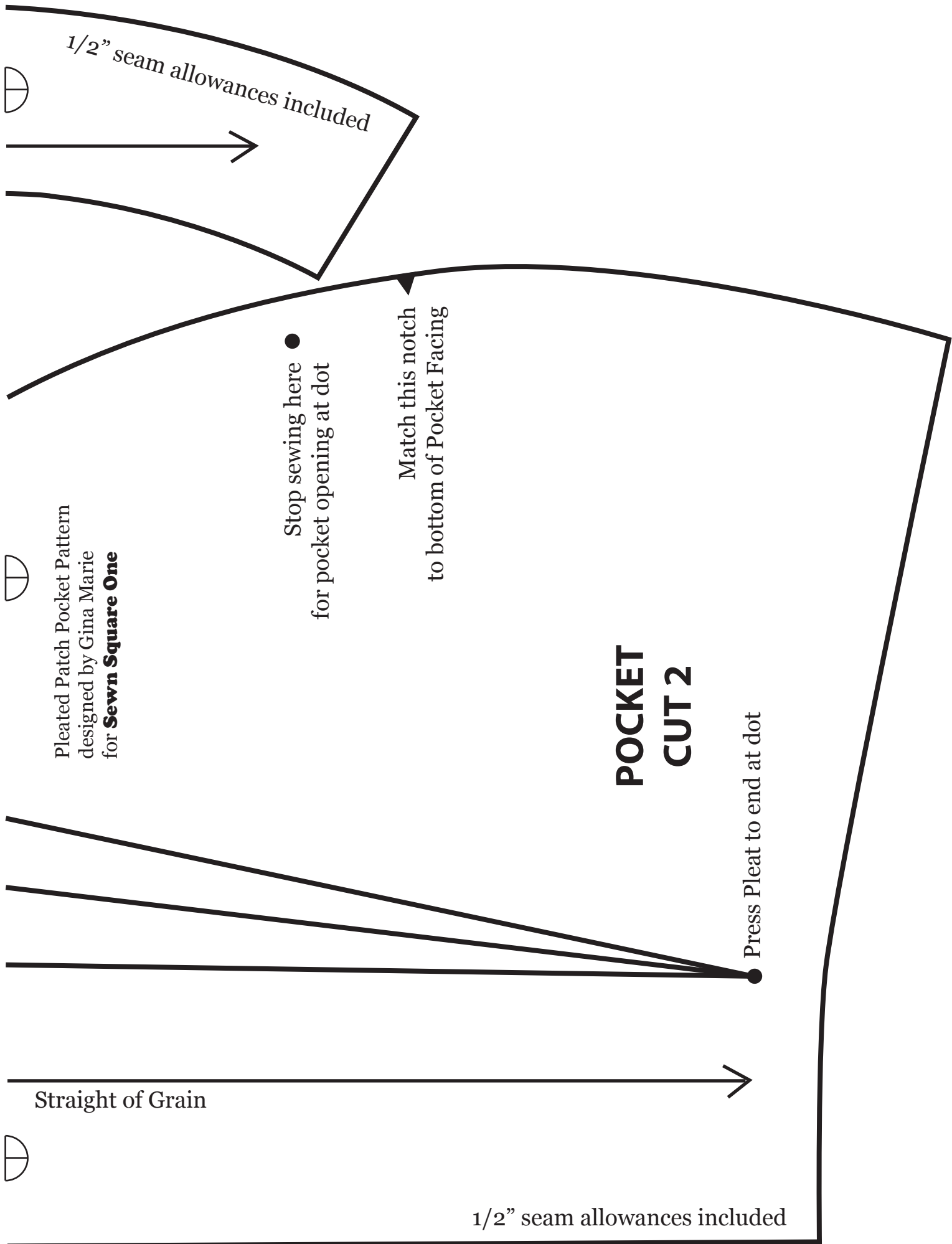
Pleated Patch Pocket Pattern
designed by Gina Marie
for **Sewn Square One**

Straight of Grain

1" x 1"
Print Test
Box

Fold at center line for Pocket Pleat





1/2" seam allowances included

● Stop sewing here for pocket opening at dot

Match this notch to bottom of Pocket Facing

POCKET CUT 2

● Press Pleat to end at dot

Straight of Grain

1/2" seam allowances included

Pleated Patch Pocket Pattern
designed by Gina Marie
for **Sewn Square One**