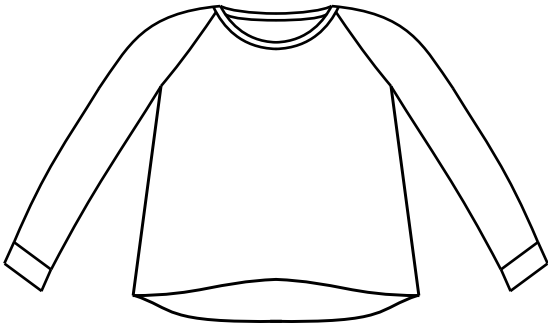


## Hot Cocoa Sweater

a



Long, raglan sleeve knit sweater with round neckline, curved, narrow hem and sleeve cuffs.

-----  
1/4" Seam Allowances included

### ✂ Fabric and Supplies

Light to Mid-weight, stable knits like jersey, doubleknit and sweater knits; matching thread.

Body Measurement  
(inches/cm)

Bust 34 / 86

Finished Garment  
Measurement (inches/cm)

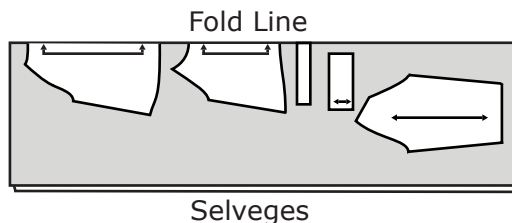
Bust 39 / 99  
Hem Opening 46 / 116.75  
Front Length\* 19 / 48.25  
Back Length\* 21.5 / 54.5

\*measured from center back neck down

Fabric Needed  
(yards/meters)

45" wide  
& 1.5 / 1.4  
60" wide

### ✂ Cutting Layout 45" & 60" wide



1



## Instructions

1. Right sides facing, stitch Front to Sleeve, matching single notches. Repeat with the other sleeve.

a

2. Right sides facing, stitch Back to Sleeve, matching double notches. Repeat with the other sleeve.

3. Right sides facing, stitch from the end of the sleeve down the side to the hem. Repeat for the other side.

4. Fold hem under 1/4" and top stitch with a zig zag stitch or twin needle.

### Cuffs

5. Right sides facing, stitch the notched edges of cuff together.

6. Fold the cuff, right side out, matching un-notched edges.

7. Pin cuff to sleeve end, right sides facing and matching seamlines. Stitch. Press seam allowance toward sleeve. Repeat for the other cuff.

### Collar

8. Stay stitch the neck opening along the seamline with a long machine stitch.

9. Right sides facing, stitch the short edges of the collar together.

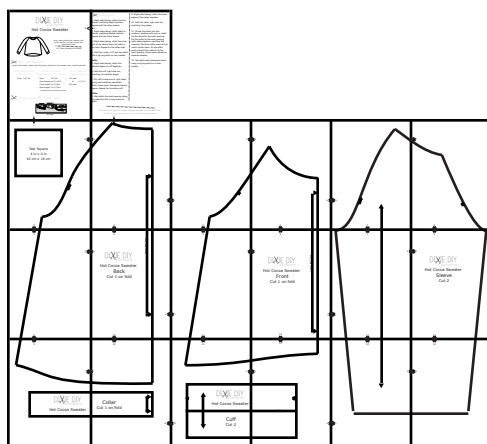
10. Fold the collar, right side out, matching long edges.

11. Divide the collar into four sections, marking with pins or chalk. Do the same for the neck opening. Pin the collar to the neck opening, right sides together, matching the marking. Place the collar seam at the neck's center back. As you stitch gently stretch the collar to fit the neck opening. Press seam allowance towards sweater.

12. Top stitch seam allowance down using a zig zag stitch or a twin needle.



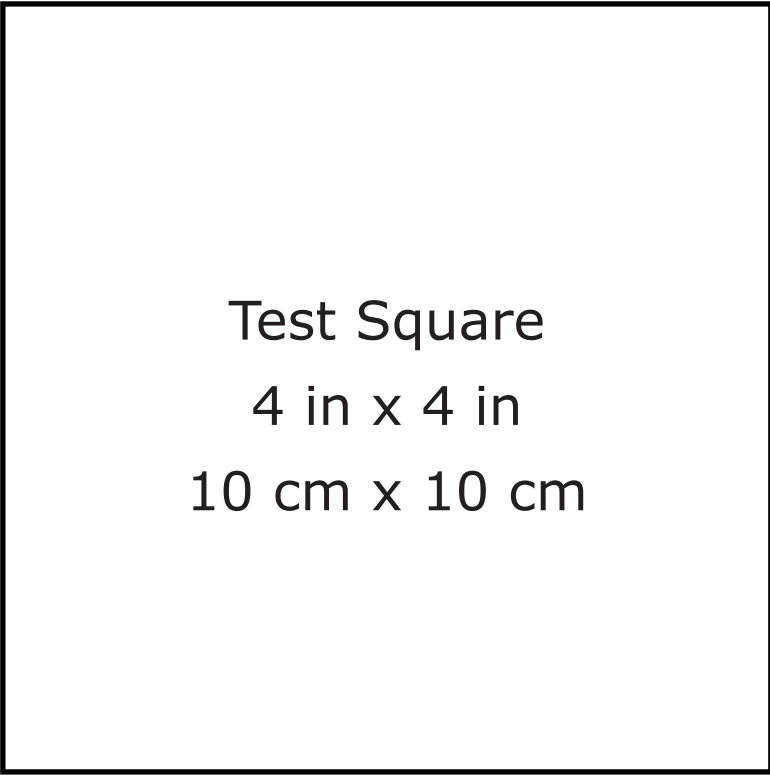
## Printing Layout



For more info, photos or help with this pattern visit [DixieDIY.com](http://DixieDIY.com)

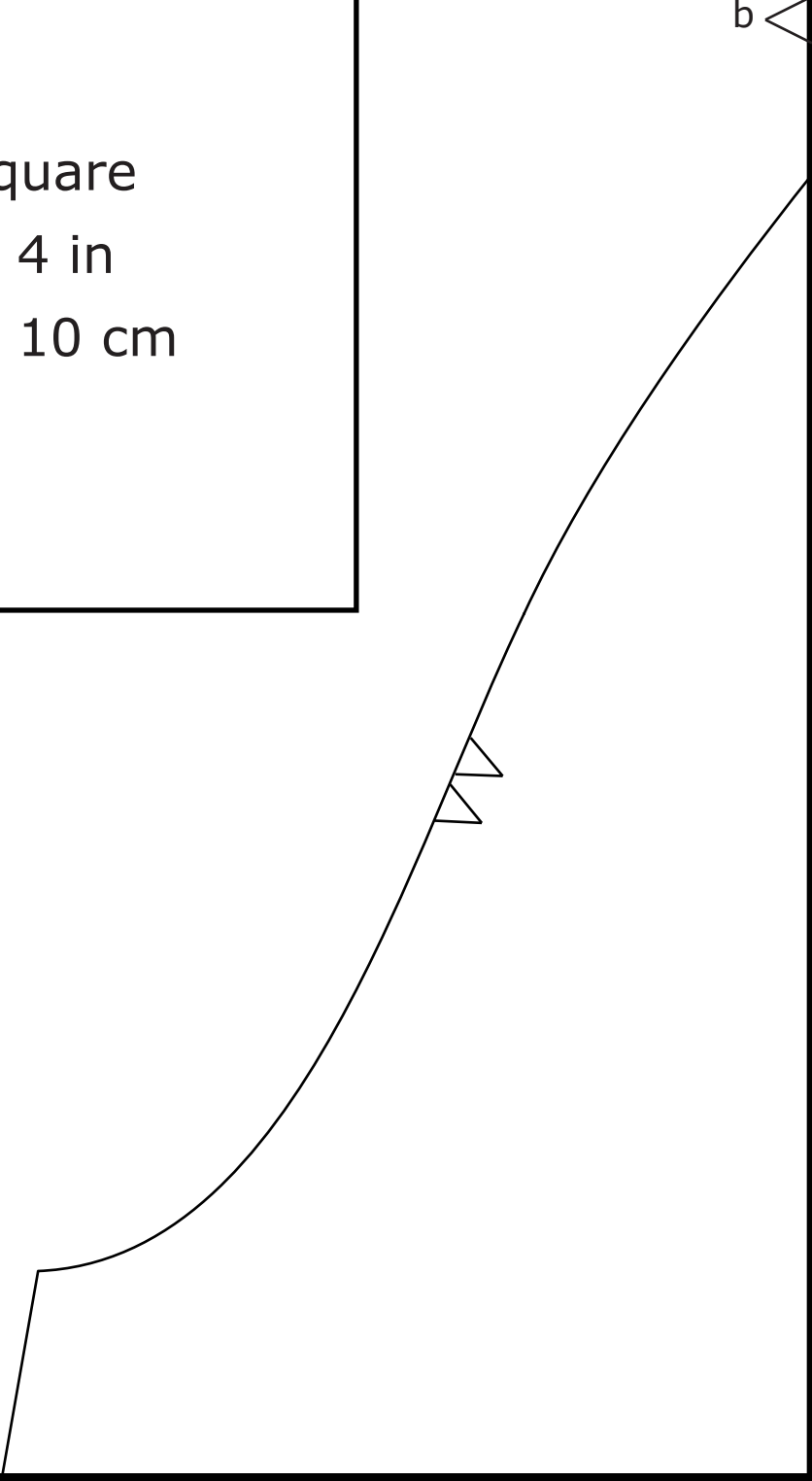
© 2012 Dixie Davis. Pattern and instructions intended for personal use only.

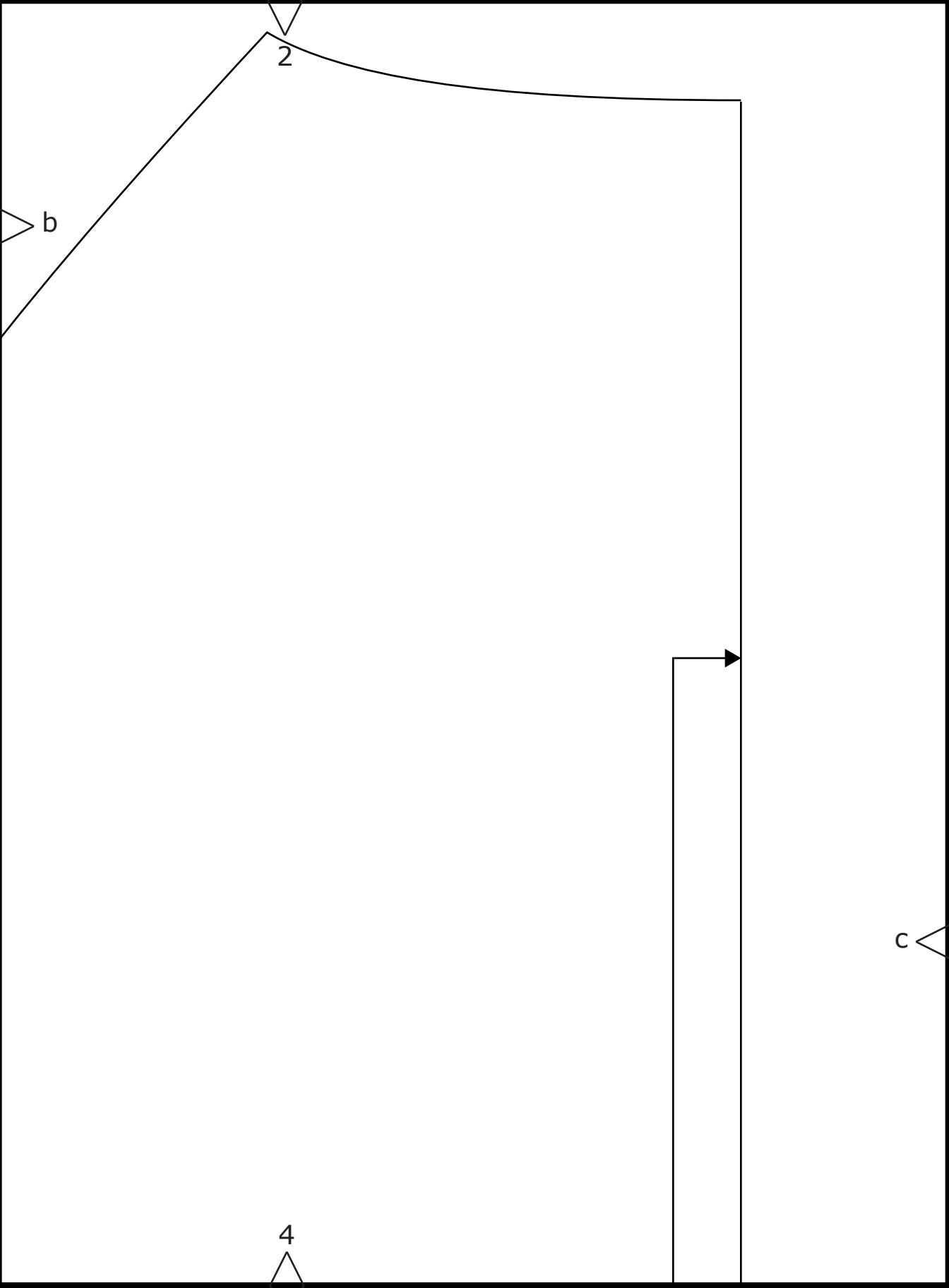
1

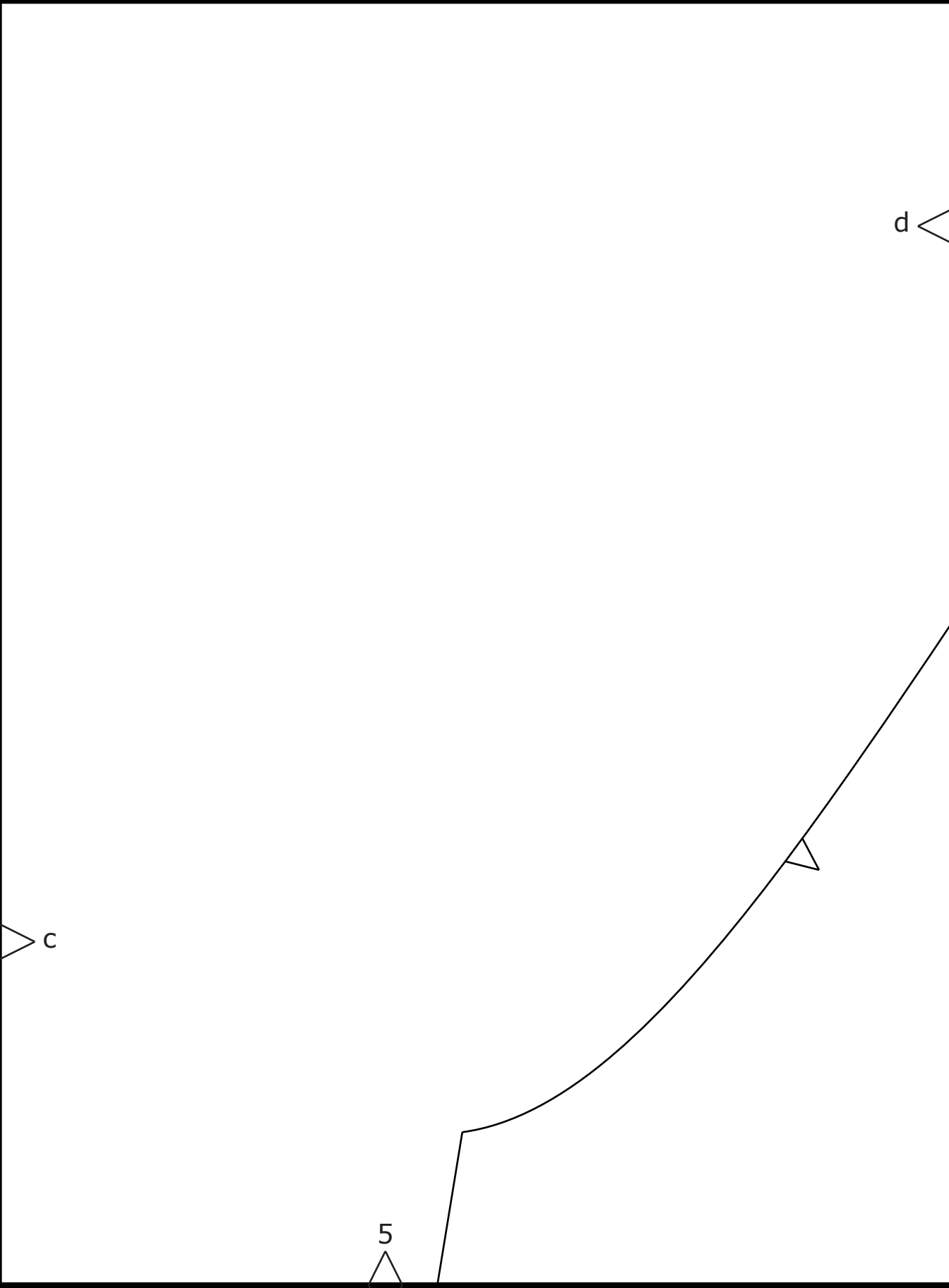


b

3



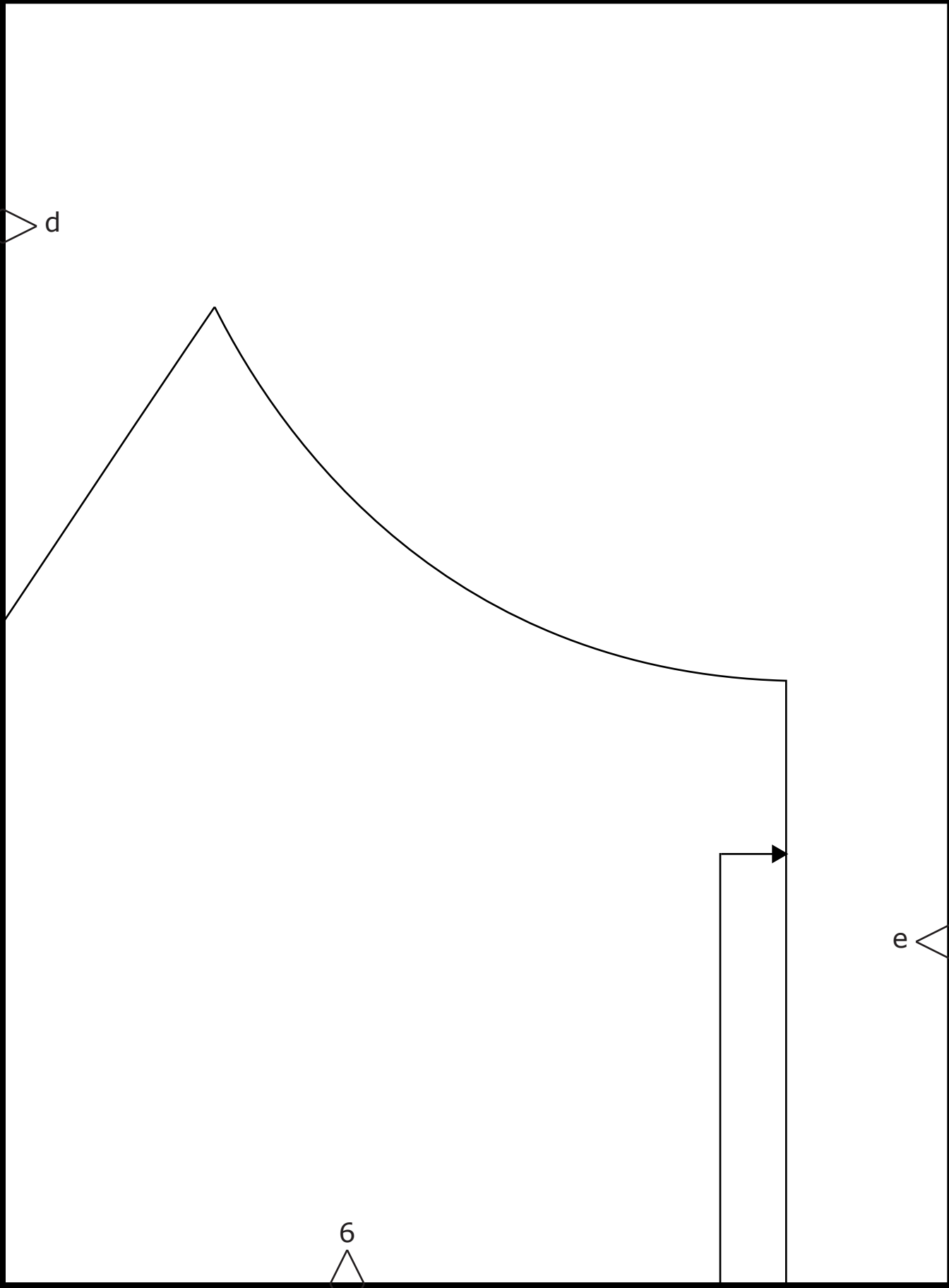


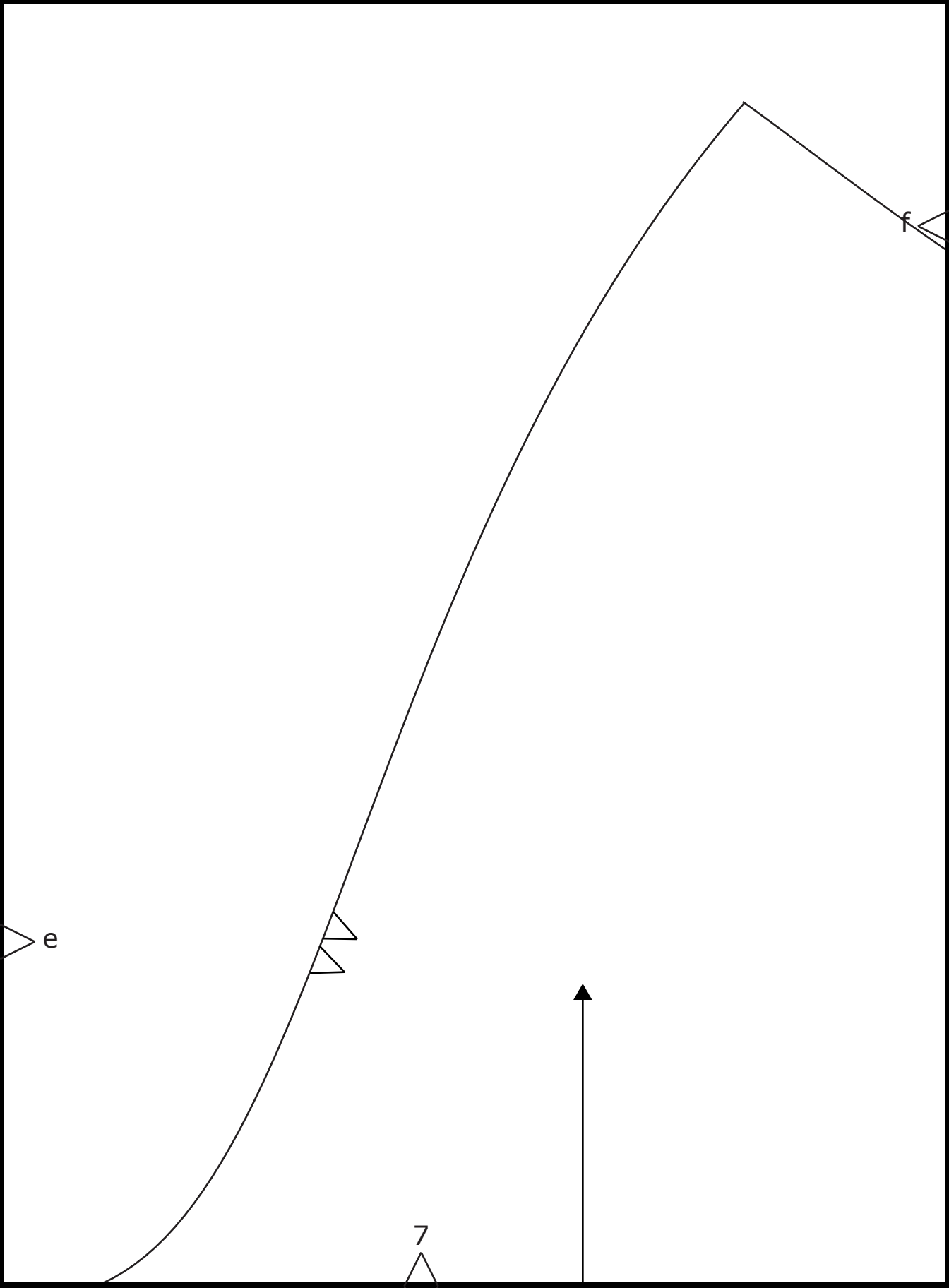


c

5

d





f

8





3

9

g

4

g



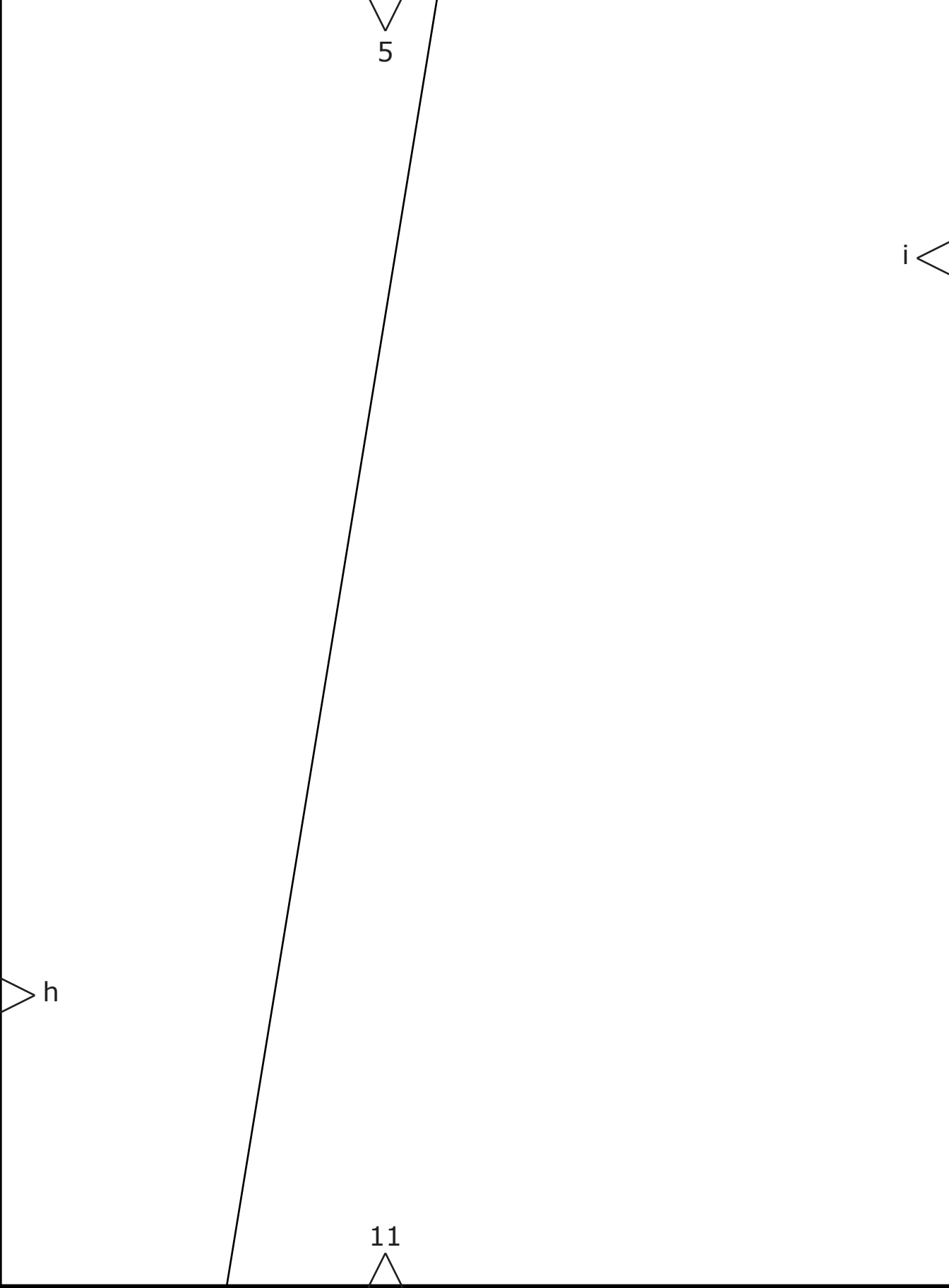
# Hot Cocoa Sweater Back

Cut 1 on fold

Center Back Fold

10

h



6

i



Hot Cocoa Sweater  
Front  
Cut 1 on fold

Center Back Fold

j

12

7

k

13

j

8

k



# Hot Cocoa Sweater Sleeve Cut 2

14

9



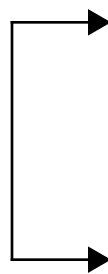
DIXIE DIY  
patterns

# Hot Cocoa Sweater

10



**Collar**  
Cut 1 on fold



m



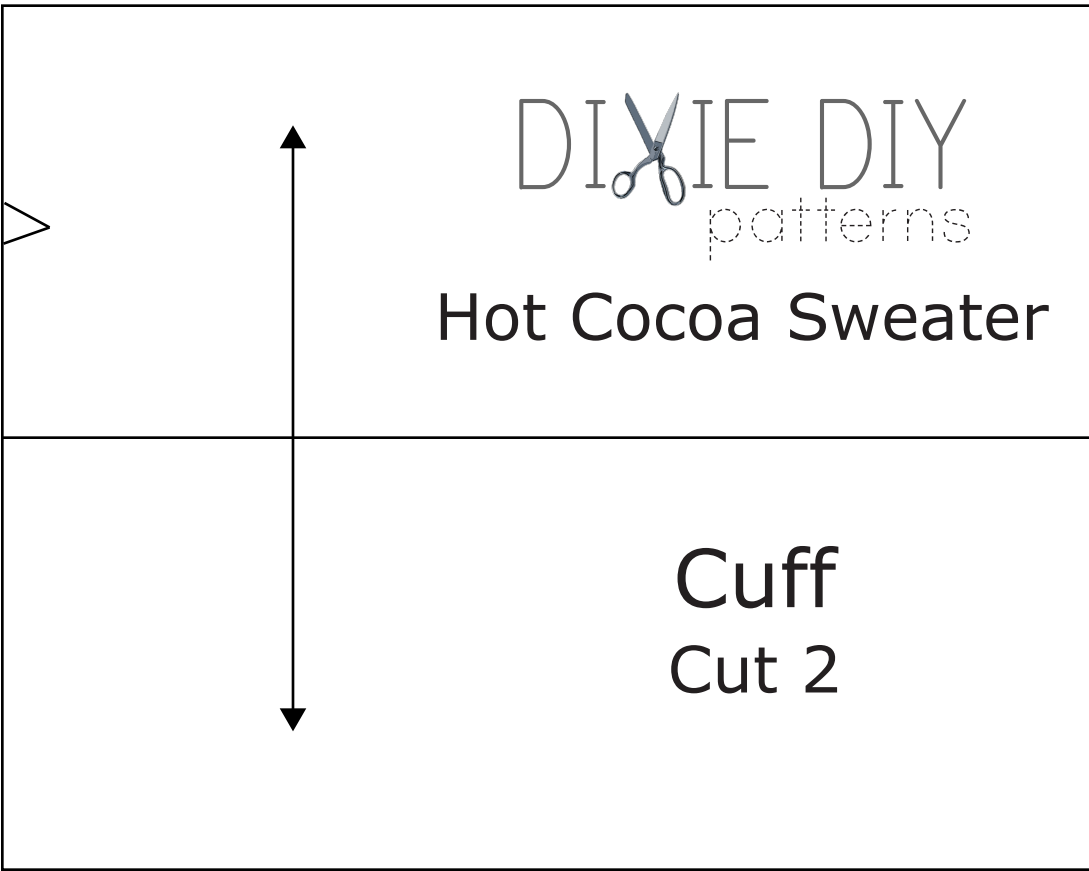
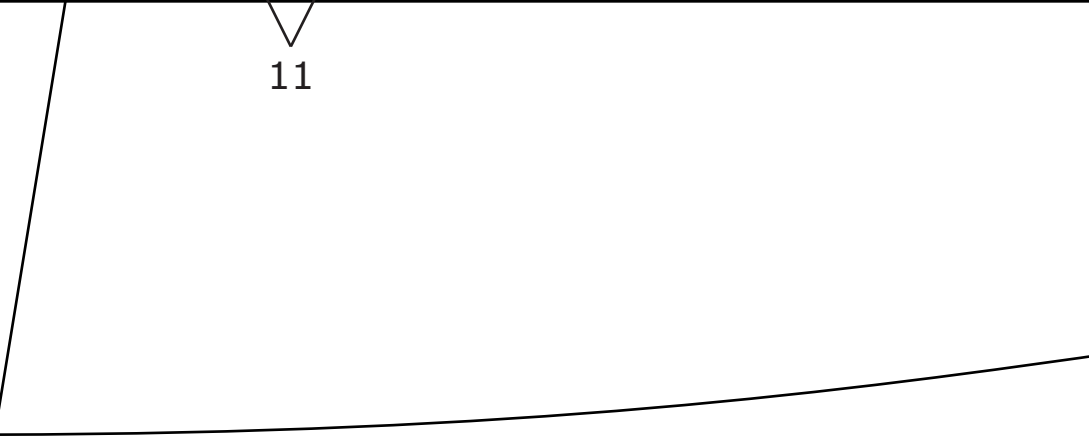
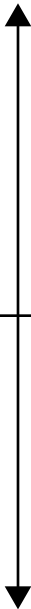
11

n

DIE DIE  
patterns

Hot Cocoa Sweater

Cuff  
Cut 2



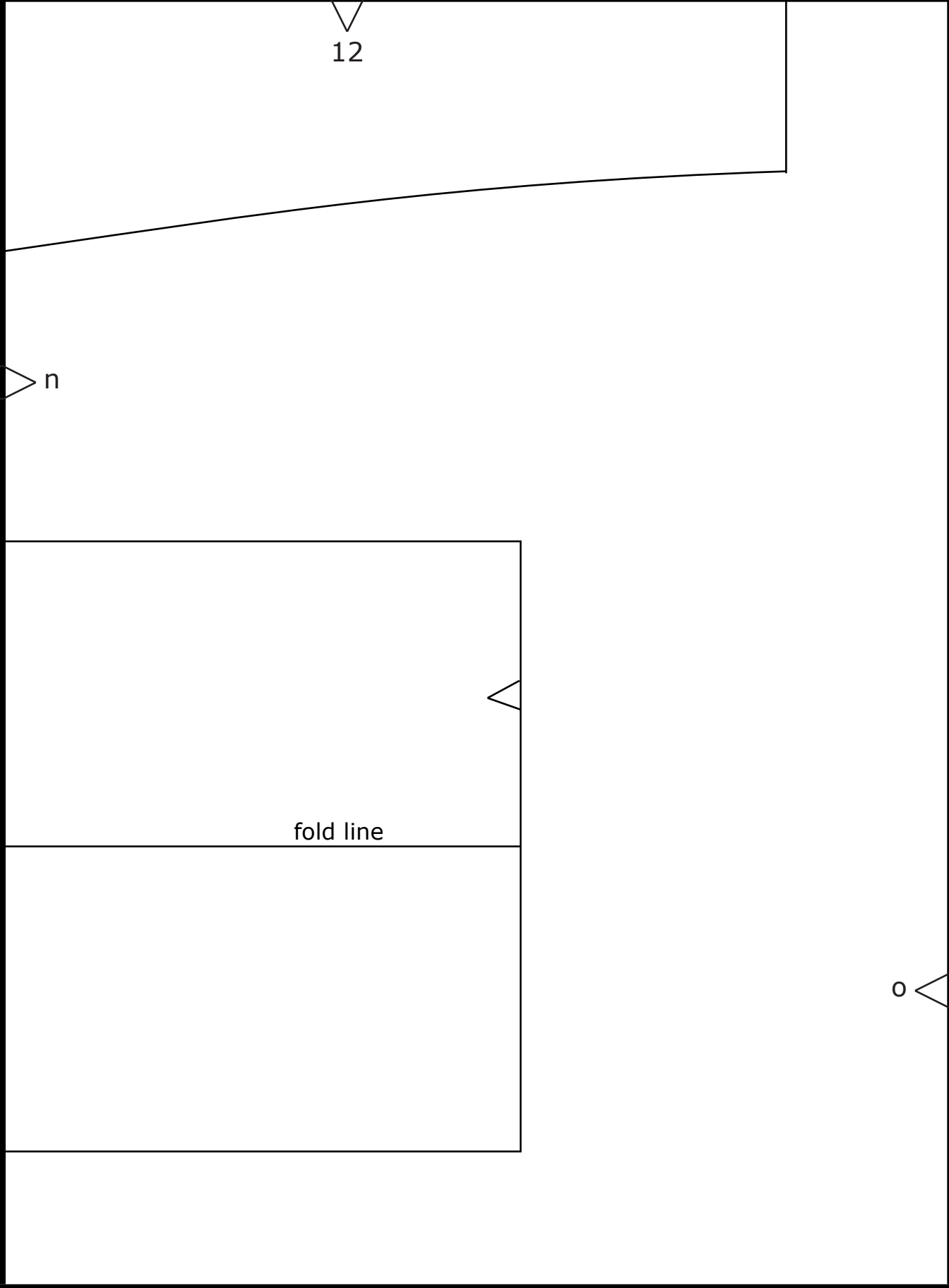
m

12

n

fold line

o





A diagram showing a vertical line on the left, a horizontal line at the bottom, and a diagonal line connecting them. A vertical arrow points downwards from the top. Labels '13', 'p', and 'o' are positioned at the top, right, and bottom-left respectively.

13

p

o



14

p